

LEGEND

SURVEY


- TOP OF BANK
- BOTTOM OF BANK
- OVERLAND FLOW
- BUILDING
- WATER
- COMMUNICATIONS; PIT
- EXISTING ELECTRICITY; POWERPOLE; LIGHTPOLE
- LEACHATE LINE; ACCESS CHAMBER
- GAS COLLECTION LINES
- DRAINAGE PIPE WITH HEADWALLS
- DRAINAGE
- FENCE
- BOUNDARY
- NS CONTOUR WITH HEIGHT
- EXISTING INFRASTRUCTURE TO BE DEMOLISHED
- EXISTING TREE
- EXISTING TREELINE
- EXISTING SIGNAGE
- PERMANENT SURVEY MARK
- EXISTING STOCKPILE

LEGEND

PROPOSED WORKS

- GABION RETAINING WALL
- BASIN EXCLUSION FENCE
- CONTOUR WITH HEIGHT LABEL
- STORMWATER PIPE (DRAINAGE DETAIL PLANS) WITH PIPE SIZE; PIT; LINTEL
- HEADWALL WITH ROCK OUTLET PROTECTION
- CAUTION: OVERHEAD HIGH VOLTAGE CABLES. WORKS TO BE CARRIED OUT UNDER THE REQUIREMENTS OF AUSGRID SAFE WORK PROCEDURES
- BIORETENTION
- PROPOSED STRUCTURE
- KO
- K&G
- ROLL KERB AND GUTTER
- STORMWATER DIVERSION BANK
- TREES TO BE REMOVED
- PROPOSED STORMWATER PIPE (DETAIL PLANS)
- LEACHATE TO BE RETAINED
- LEACHATE TO BE REMOVED
- PROPOSED LEACHATE COLLECTION PIPE
- PROPOSED LEACHATE DRAIN
- EXISTING WEIGHBRIDGE
- NEW BUILDING WORKS
- D & C CONTRACT BOUNDARY

ORIGIN OF LEVELS			
NAME	EASTING	NORTHING	RL
PM 31891	366485.731	6373014.743	30.735



DIAL BEFORE YOU DIG
www.1100.com.au

UTILITY INFORMATION SHOWN ON THESE PLANS DOES NOT DEPICT ANY MORE THAN THE PRESENCE OF A SERVICE, BASED ON AVAILABLE DOCUMENTARY EVIDENCE. THE PRESENCE OF A UTILITY SERVICE, ITS SIZE AND LOCATION SHOULD BE CONFIRMED BY FIELD INSPECTION, PRIOR TO THE COMMENCEMENT OF ROADWORKS AND THE RELEVANT UTILITY PLANS OBTAINED BY DIALLING DIAL BEFORE YOU DIG '1100'. CAUTION SHOULD BE EXERCISED WHEN WORKING IN THE VICINITY OF ALL UTILITY SERVICES.

THIS DRAWING INCLUDES COLOURED INFORMATION. IF YOU HAVE A BLACK AND WHITE COPY YOU DO NOT HAVE ALL THE INFORMATION. THIS NOTE IS COLOURED RED.

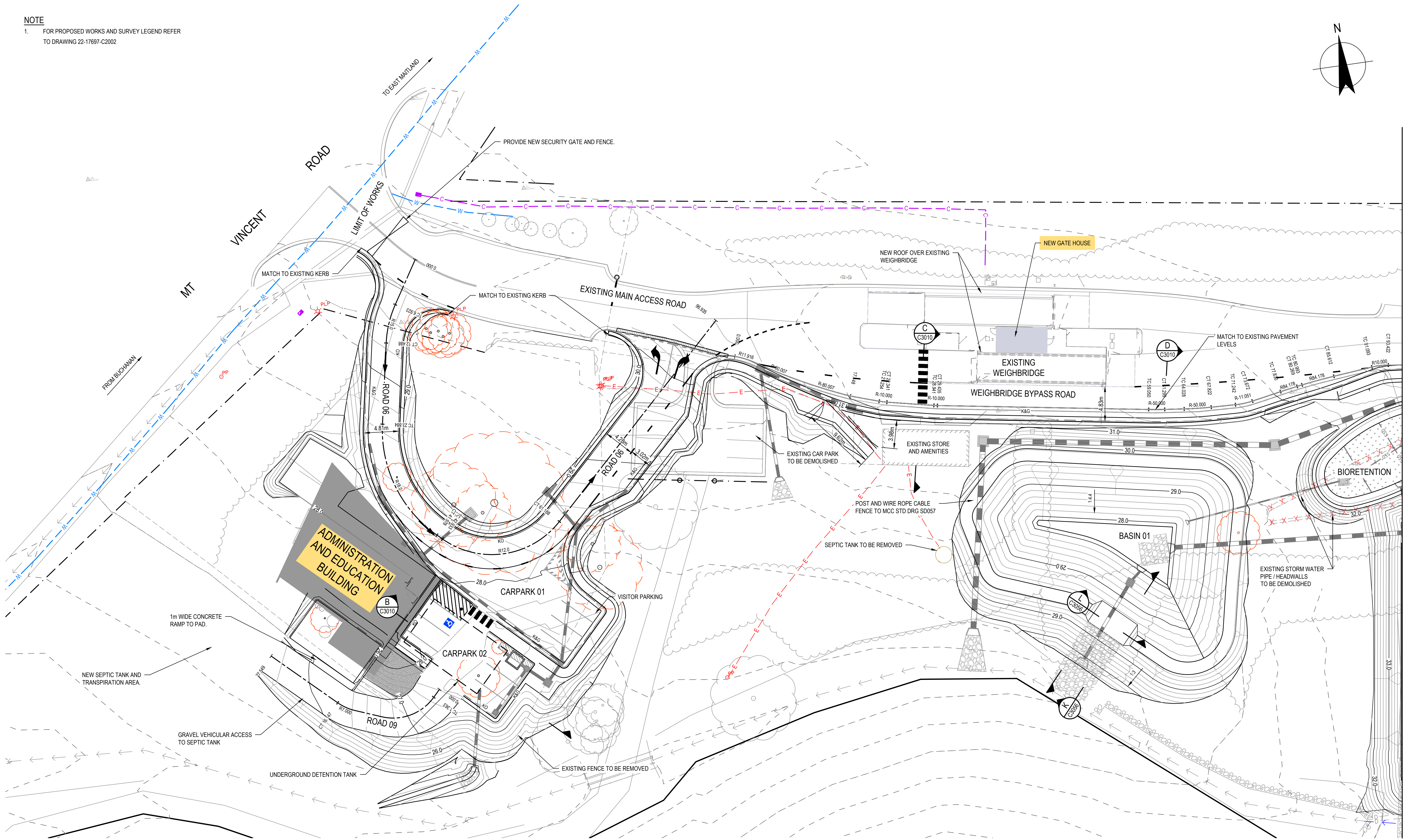
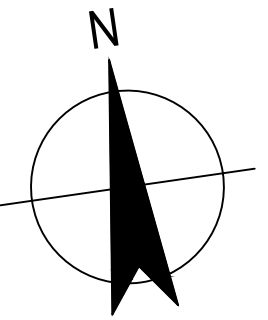
PLAN
SCALE 1:2000

DETAIL DESIGN

--	--	--	--	--	--	--	--	--	--	--	--	--	--	--	--	--	--	--	--	--	--	--	--	--	--	--	--	--	--	--	--	--	--	--	--	--	--	--	--	--	--	--	--	--	--	--	--	--	--	--	--	--	--	--	--	--	--	--	--	--	--	--	--	--	--	--	--	--	--	--	--	--	--	--	--	--	--	--	--	--	--	--	--	--	--	--	--	--	--	--	--	--	--	--	--	--	--	--	--	--	--	--	--	--	--	--	--	--	--	--	--	--	--	--	--	--	--	--	--	--	--	--	--	--	--	--	--	--	--	--	--	--	--	--	--	--	--	--	--	--	--	--	--	--	--	--	--	--	--	--	--	--	--	--	--	--	--	--	--	--	--	--	--	--	--	--	--	--	--	--	--	--	--	--	--	--	--	--	--	--	--	--	--	--	--	--	--	--	--	--	--	--	--	--	--	--	--	--	--	--	--	--	--	--	--	--	--	--	--	--	--	--	--	--	--	--	--	--	--	--	--	--	--	--	--	--	--	--	--	--	--	--	--	--	--	--	--	--	--	--	--	--	--	--	--	--	--	--	--	--	--	--	--	--	--	--	--	--	--	--	--	--	--	--	--	--	--	--	--	--	--	--	--	--	--	--	--	--	--	--	--	--	--	--	--	--	--	--	--	--	--	--	--	--	--	--	--	--	--	--	--	--	--	--	--	--	--	--	--	--	--	--	--	--	--	--	--	--	--	--	--	--	--	--	--	--	--	--	--	--	--	--	--	--	--	--	--	--	--	--	--	--	--	--	--	--	--	--	--	--	--	--	--	--	--	--	--	--	--	--	--	--	--	--	--	--	--	--	--	--	--	--	--	--	--	--	--	--	--	--	--	--	--	--	--	--	--	--	--	--	--	--	--	--	--	--	--	--	--	--	--	--	--	--	--	--	--	--	--	--	--	--	--	--	--	--	--	--	--	--	--	--	--	--	--	--	--	--	--	--	--	--	--	--	--	--	--	--	--	--	--	--	--	--	--	--	--	--	--	--	--	--	--	--	--	--	--	--	--	--	--	--	--	--	--	--	--	--	--	--	--	--	--	--	--	--	--	--	--	--	--	--	--	--	--	--	--	--	--	--	--	--	--	--	--	--	--	--	--	--	--	--	--	--	--	--	--	--	--	--	--	--	--	--	--	--	--	--	--	--	--	--	--	--	--	--	--	--	--	--	--	--	--	--	--	--	--	--	--	--	--	--	--	--	--	--	--	--	--	--	--	--	--	--	--	--	--	--	--	--	--	--	--	--	--	--	--	--	--	--	--	--	--	--	--	--	--	--	--	--	--	--	--	--	--	--	--	--	--	--	--	--	--	--	--	--	--	--	--	--	--	--	--	--	--	--	--	--	--	--	--	--	--	--	--	--	--	--	--	--	--	--	--	--	--	--	--	--	--	--	--	--	--	--	--	--	--	--	--	--	--	--	--	--	--	--	--	--	--	--	--	--	--	--	--	--	--	--	--	--	--	--	--	--	--	--	--	--	--	--	--	--	--	--	--	--	--	--	--	--	--	--	--	--	--	--	--	--	--	--	--	--	--	--	--	--	--	--	--	--	--	--	--	--	--	--	--	--	--	--	--	--	--	--	--	--	--	--	--	--	--	--	--	--	--	--	--	--	--	--	--	--	--	--	--	--	--	--	--	--	--	--	--	--	--	--	--	--	--	--	--	--	--	--	--	--	--	--	--	--	--	--	--	--	--	--	--	--	--	--	--	--	--	--	--	--	--	--	--	--	--	--	--	--	--	--	--	--	--	--	--	--	--	--	--	--	--	--	--	--	--	--	--	--	--	--	--	--	--	--	--	--	--	--	--	--	--	--	--	--	--	--	--	--	--	--	--	--	--	--	--	--	--	--	--	--	--	--	--	--	--	--	--	--	--	--	--	--	--	--	--	--	--	--	--	--	--	--	--	--	--	--	--	--	--	--	--	--	--	--	--	--	--	--	--	--	--	--	--	--	--	--	--	--	--	--	--	--	--	--	--	--	--	--	--	--	--	--	--	--	--	--	--	--	--	--	--	--	--	--	--	--	--	--	--	--	--	--	--	--	--	--	--	--	--	--	--	--	--	--	--	--	--	--	--	--	--	--	--	--	--	--	--	--	--	--	--	--	--	--	--	--	--	--	--	--	--	--	--	--	--	--	--	--	--	--	--	--	--	--	--	--	--	--	--	--	--	--	--	--	--	--	--	--	--	--	--	--	--	--	--	--	--	--	--	--	--	--	--	--	--	--	--	--	--	--	--	--	--	--	--	--	--	--	--	--	--	--	--	--	--	--	--	--	--	--	--	--	--	--	--	--	--	--	--	--	--	--	--	--	--	--	--	--	--	--	--	--	--	--	--	--	--	--	--	--	--	--	--	--	--	--	--	--	--	--	--	--	--	--	--	--	--	--	--	--	--	--	--	--	--	--	--	--	--	--	--	--	--	--	--	--	--	--	--	--	--	--	--	--	--	--	--	--	--	--	--	--	--	--	--	--	--	--	--	--	--	--	--	--	--	--	--	--	--	--	--	--	--	--	--	--	--	--	--	--	--	--	--	--	--	--	--	--	--	--	--	--	--	--	--	--	--	--	--	--	--	--	--	--	--	--	--	--	--	--	--	--	--	--	--	--	--	--	--	--	--	--	--	--	--	--	--	--	--	--	--	--	--	--	--	--	--	--	--	--	--	--	--	--	--	--	--	--	--	--	--	--	--	--	--	--	--	--	--	--	--	--	--	--	--	--	--	--	--	--	--	--	--	--	--	--	--	--	--	--	--	--	--	--	--	--	--	--	--	--	--	--	--	--	--	--	--	--	--	--	--	--	--	--	--	--	--	--	--	--	--	--	--	--	--	--	--	--	--	--	--	--	--	--	--	--	--	--	--	--	--	--	--	--	--	--	--	--	--	--	--	--	--	--	--	--	--	--	--	--	--	--	--	--	--	--	--	--	--	--	--	--	--	--	--	--	--	--	--	--	--	--	--	--	--	--	--	--	--	--	--	--	--	--	--	--	--	--	--	--	--	--	--	--	--	--	--	--	--	--	--	--	--	--	--	--	--	--	--	--	--	--	--	--	--	--	--	--	--	--	--	--	--	--	--	--	--	--	--	--	--	--	--	--	--	--	--	--	--	--	--	--	--	--	--	--	--	--	--	--	--	--	--	--	--	--	--	--	--	--	--	--	--	--	--	--	--	--	--	--	--	--	--	--	--	--	--	--	--	--	--	--	--	--	--	--	--	--	--	--	--	--	--	--	--	--	--	--	--	--	--	--	--	--	--	--	--	--	--	--	--	--	--	--	--	--	--	--	--	--	--	--	--	--	--	--	--	--	--	--	--	--	--	--	--	--	--	--	--	--	--	--	--	--	--	--	--	--	--	--	--	--	--	--	--	--	--	--	--	--	--	--	--	--	--	--	--	--	--	--	--	--	--	--	--	--	--	--	--	--	--	--	--	--	--	--	--	--	--	--	--	--	--	--	--	--	--	--	--	--	--	--	--	--	--	--	--	--	--	--	--	--	--	--	--	--	--	--	--	--	--	--	--	--	--	--	--	--	--	--	--	--	--	--	--	--	--	--	--	--	--	--	--	--	--	--	--	--	--	--	--	--	--	--	--	--	--	--	--	--	--	--	--	--	--	--	--	--	--	--	--	--	--	--	--	--	--	--	--	--	--	--	--	--	--	--	--	--	--	--	--	--	--	--	--	--	--	--	--	--	--	--	--	--	--	--	--	--	--	--	--	--	--	--	--	--	--	--	--	--	--	--	--	--	--	--	--	--	--	--	--	--	--	--	--	--	--	--	--	--	--	--	--	--	--	--	--	--	--	--	--	--	--	--	--	--	--	--	--	--	--	--	--	--	--	--	--	--	--	--	--	--	--	--	--	--	--	--	--	--	--	--	--	--	--	--	--	--	--	--	--	--	--	--	--	--	--	--	--	--	--	--	--	--	--	--	--	--	--	--	--	--	--	--	--	--	--	--	--	--	--	--	--	--	--	--	--	--	--	--	--	--	--	--	--	--	--	--	--	--	--	--	--	--	--	--	--	--	--	--	--	--	--	--	--	--	--	--	--	--	--	--	--	--	--	--	--	--	--	--	--	--	--	--	--	--	--	--	--	--	--	--	--	--	--	--	--	--	--	--	--	--	--	--	--	--	--	--	--	--	--	--	--	--	--	--	--	--	--	--	--	--	--	--	--	--	--	--	--	--	--	--	--	--	--	--	--	--	--	--	--	--	--	--	--	--	--	--	--	--	--	--	--	--	--	--	--	--	--	--	--	--	--	--	--	--	--	--	--	--	--	--	--	--	--	--	--	--	--	--	--	--	--	--	--	--	--	--	--	--	--	--	--	--	--	--	--	--	--	--	--	--	--	--	--	--	--	--	--	--	--	--	--	--	--	--	--	--	--	--	--	--	--	--	--	--	--	--	--	--	--	--	--	--	--	--	--	--	--	--	--	--	--	--	--	--	--	--	--	--	--	--	--	--	--	--	--	--	--	--	--	--	--	--	--	--	--	--	--	--	--	--	--	--	--	--	--	--	--	--	--	--	--	--	--	--	--	--	--	--	--	--	--	--	--	--	--	--	--	--	--	--	--	--	--	--	--	--	--	--	--	--	--	--	--	--	--	--	--	--	--	--	--	--	--	--	--	--	--	--	--	--	--	--	--	--	--	--	--	--	--	--	--	--	--	--	--	--	--	--	--	--	--	--	--	--	--	--	--	--	--	--	--	--	--	--	--	--	--	--	--	--	--	--	--	--	--	--	--	--	--	--	--	--	--	--	--	--	--	--	--	--	--	--	--	--	--	--	--	--	--	--	--	--	--	--	--	--	--	--	--	--	--	--	--	--	--	--	--	--	--	--	--	--	--	--	--	--	--	--	--	--	--	--	--	--	--	--	--	--	--	--	--	--	--	--	--	--	--	--	--	--	--	--	--	--	--	--	--	--	--	--	--	--	--	--	--	--	--	--	--	--	--	--	--	--	--	--	--	--	--	--	--	--	--	--	--	--	--	--	--	--	--	--	--	--	--	--	--	--	--	--	--	--	--	--	--	--	--	--	--	--	--	--	--	--	--	--	--	--	--	--	--	--	--	--	--	--	--	--	--	--	--	--	--	--	--	--	--	--	--	--	--	--	--	--	--	--	--	--	--	--	--	--	--	--	--	--	--	--	--	--	--	--	--	--	--	--	--	--	--	--	--	--	--	--	--	--	--	--	--	--	--	--	--	--	--	--	--	--	--	--	--	--	--	--	--	--	--	--	--	--	--	--	--	--	--	--	--	--	--	--	--	--	--	--	--	--	--	--	--	--	--	--	--	--	--	--	--	--	--	--	--	--	--	--	--	--	--	--	--	--	--	--	--	--	--	--	--	--	--	--	--	--	--	--	--	--	--	--	--	--	--	--	--	--	--	--	--	--	--	--	--	--	--	--	--	--	--	--	--	--	--	--	--	--	--	--	--	--	--	--	--	--	--	--	--	--	--	--	--	--	--	--	--	--	--	--	--	--	--	--	--	--	--	--	--	--	--	--	--	--	--	--	--	--	--	--	--	--	--	--	--	--	--	--	--	--	--	--	--	--	--	--	--	--	--	--	--	--	--	--	--	--	--	--	--	--	--	--	--	--	--	--	--	--	--	--	--	--	--	--	--	--	--	--	--	--	--	--	--	--	--	--	--	--	--	--	--	--	--	--	--	--	--	--	--	--	--	--	--	--	--	--	--	--	--	--	--	--	--	--	--	--	--	--	--	--	--	--	--	--	--	--	--	--	--	--	--	--	--	--	--	--	--	--	--	--	--	--	--	--	--	--	--	--	--	--	--	--	--	--	--	--	--	--	--	--	--	--	--	--	--	--	--	--	--	--	--	--	--	--	--	--	--	--	--	--	--	--	--	--	--	--	--	--	--	--	--	--	--	--	--	--	--	--	--	--	--	--	--	--	--	--	--	--	--	--	--	--	--	--	--	--	--	--	--	--	--	--	--	--	--	--	--	--	--	--	--	--	--	--	--	--	--	--	--	--	--	--	--	--	--	--	--	--	--	--	--	--	--	--	--	--	--	--	--	--	--	--	--	--	--	--	--	--	--	--	--	--	--	--	--	--	--	--	--	--	--	--	--	--	--	--	--	--	--	--	--	--	--	--	--	--	--	--	--	--	--	--	--	--	--	--	--	--	--	--	--	--	--	--	--	--	--	--	--	--	--	--	--	--	--	--	--	--	--	--	--	--	--	--	--	--	--	--	--	--	--	--	--	--	--	--	--	--	--	--	--	--	--	--	--	--	--	--	--	--	--	--	--	--	--	--	--	--	--	--	--	--	--	--	--	--	--	--	--	--	--	--	--	--	--	--	--	--	--	--	--	--	--	--	--	--	--	--	--	--	--	--	--	--	--	--	--	--	--	--	--	--	--	--	--	--	--	--	--	--	--	--	--	--	--	--	--	--	--	--	--	--	--	--	--	--	--	--	--	--	--	--	--	--	--	--	--	--	--	--	--	--	--	--	--	--	--	--	--	--	--	--	--	--	--	--	--	--	--	--	--	--	--	--	--	--	--	--	--	--	--	--	--	--	--	--	--	--	--	--	--	--	--	--	--	--	--	--	--	--	--	--	--	--	--	--	--	--	--	--	--	--	--	--	--	--	--	--	--	--	--	--	--	--	--	--	--	--	--	--	--	--	--	--	--	--	--	--	--	--	--	--	--	--	--	--	--	--	--	--	--	--	--	--	--	--	--	--	--	--	--	--	--	--	--	--	--	--	--	--	--	--	--	--	--	--	--	--	--	--	--	--	--	--	--	--	--	--	--	--	--	--	--	--	--	--	--	--	--	--	--	--	--	--	--	--	--	--	--	--	--	--	--	--	--	--	--	--	--	--	--	--	--	--	--	--	--	--	--	--	--	--	--	--	--	--	--	--	--	--	--	--	--	--	--	--	--	--	--	--	--	--	--	--	--	--	--	--	--	--	--	--	--	--	--	--	--	--	--	--	--	--	--	--	--	--	--	--	--	--	--	--	--	--	--	--	--	--	--	--	--	--	--	--	--	--	--	--	--	--	--	--	--	--	--	--	--	--	--	--	--	--	--	--	--	--	--	--	--	--	--	--	--	--	--	--	--	--	--	--	--	--	--	--	--	--	--	--	--	--	--	--	--	--	--	--	--	--	--	--	--	--	--	--	--	--	--	--	--	--	--	--	--	--	--	--	--	--	--	--	--	--	--	--	--	--	--	--	--	--	--	--	--	--	--	--	--	--	--	--	--	--	--	--	--	--	--	--	--	--	--	--	--	--	--	--	--	--	--	--	--	--	--	--	--	--	--	--	--	--	--	--	--	--	--	--	--	--	--	--	--	--	--	--	--	--	--	--	--	--	--	--	--	--	--	--	--	--	--	--	--	--	--	--	--	--	--	--	--	--	--	--	--	--	--	--	--	--	--	--	--	--	--	--	--	--	--	--	--

NOTE

1. FOR PROPOSED WORKS AND SURVEY LEGEND REFER TO DRAWING 22-17697-C2002



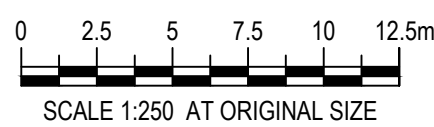
UTILITY INFORMATION SHOWN ON THESE PLANS DOES NOT DEPICT ANY MORE THAN THE PRESENCE OF A SERVICE, BASED ON AVAILABLE DOCUMENTARY EVIDENCE. THE PRESENCE OF A UTILITY SERVICE, ITS SIZE AND LOCATION SHOULD BE CONFIRMED BY FIELD INSPECTION PRIOR TO THE COMMENCEMENT OF ROADWORKS AND THE RELEVANT UTILITY PLANS OBTAINED BY DIALING DIAL BEFORE YOU DIG '1100'. CAUTION SHOULD BE EXERCISED WHEN WORKING IN THE VICINITY OF ALL UTILITY SERVICES.

THIS DRAWING INCLUDES COLOURED INFORMATION. IF YOU HAVE A BLACK AND WHITE COPY YOU DO NOT HAVE ALL THE INFORMATION. THIS NOTE IS COLOURED RED.

PLAN
SCALE 1:250

DETAIL DESIGN

B	RE-ISSUED FOR PLANNING REVIEW		BD		29.01.19
A	ISSUED FOR PLANNING REVIEW		BD		20.12.18
No	Revision	Note: * indicates signatures on original issue of drawing or last revision of drawing	Drawn	Job Manager	Project Director
					Date



GHD Tower, Level 3
24 Honeysuckle Drive, Newcastle NSW 2300 Australia
PO Box 5403 Hunter Rgn Mail Cent. NSW 2310
T 61 2 4979 9599 F 61 2 4979 9988
E ntmilmail@ghd.com W www.ghd.com

DO NOT SCALE

Conditions of Use.
This document may only be used by GHD's client (and any other person who GHD has agreed can use this document) for the purpose for which it was prepared and must not be used by any other person or for any other purpose.

Drawn C.PURDON

Designer N. HINCKS

Drafting Check

Design Check A. SNEDDON

Approved (Project Director)

Date

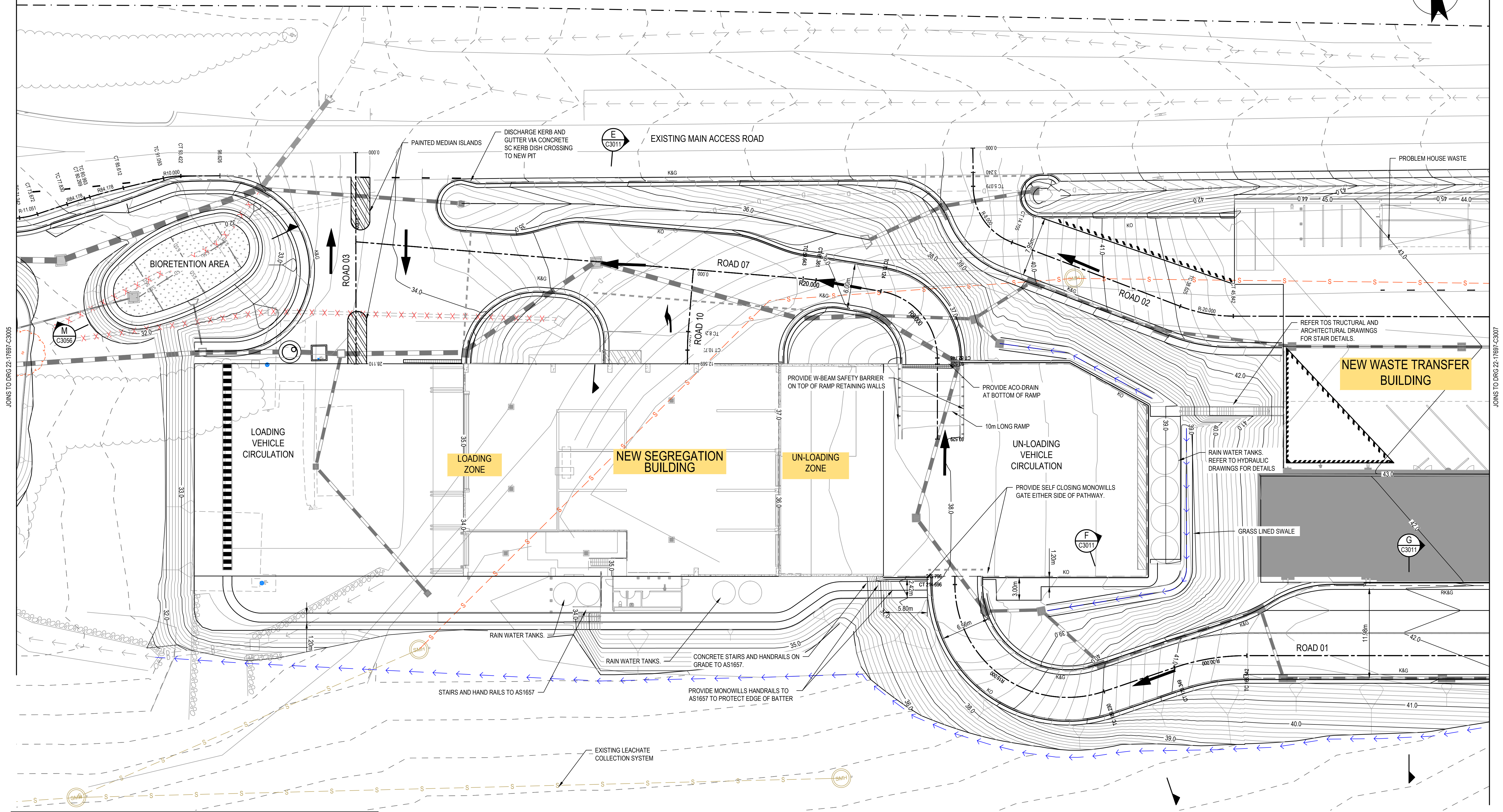
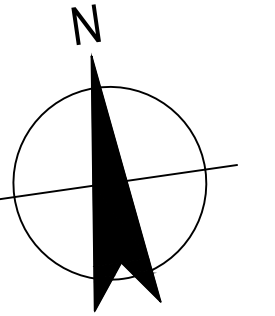
Scale AS SHOWN

This Drawing must not be used for Construction unless signed as Approved

Client	MAITLAND CITY COUNCIL
Project	MT VINCENT ROAD WASTE MANAGEMENT CENTRE
Title	DETAIL PLAN SHEET 1
Original Size	A1
Drawing No:	22-17697-C3005
Rev:	B

NOTE

1. FOR PROPOSED WORKS AND SURVEY LEGEND REFER TO DRAWING 22-17697-C2002



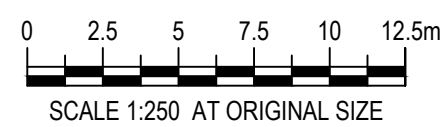
UTILITY INFORMATION SHOWN ON THESE PLANS DOES NOT DEPICT ANY MORE THAN THE PRESENCE OF A SERVICE, BASED ON AVAILABLE DOCUMENTARY EVIDENCE. THE PRESENCE OF A UTILITY SERVICE, ITS SIZE AND LOCATION SHOULD BE CONFIRMED BY FIELD INSPECTION PRIOR TO THE COMMENCEMENT OF ROADWORKS AND THE RELEVANT UTILITY PLANS OBTAINED BY DIALLING DIAL BEFORE YOU DIG '1100'. CAUTION SHOULD BE EXERCISED WHEN WORKING IN THE VICINITY OF ALL UTILITY SERVICES.

THIS DRAWING INCLUDES COLOURED INFORMATION. IF YOU HAVE A BLACK AND WHITE COPY YOU DO NOT HAVE ALL THE INFORMATION. THIS NOTE IS COLOURED RED.

PLAN
SCALE 1:250

DETAIL DESIGN

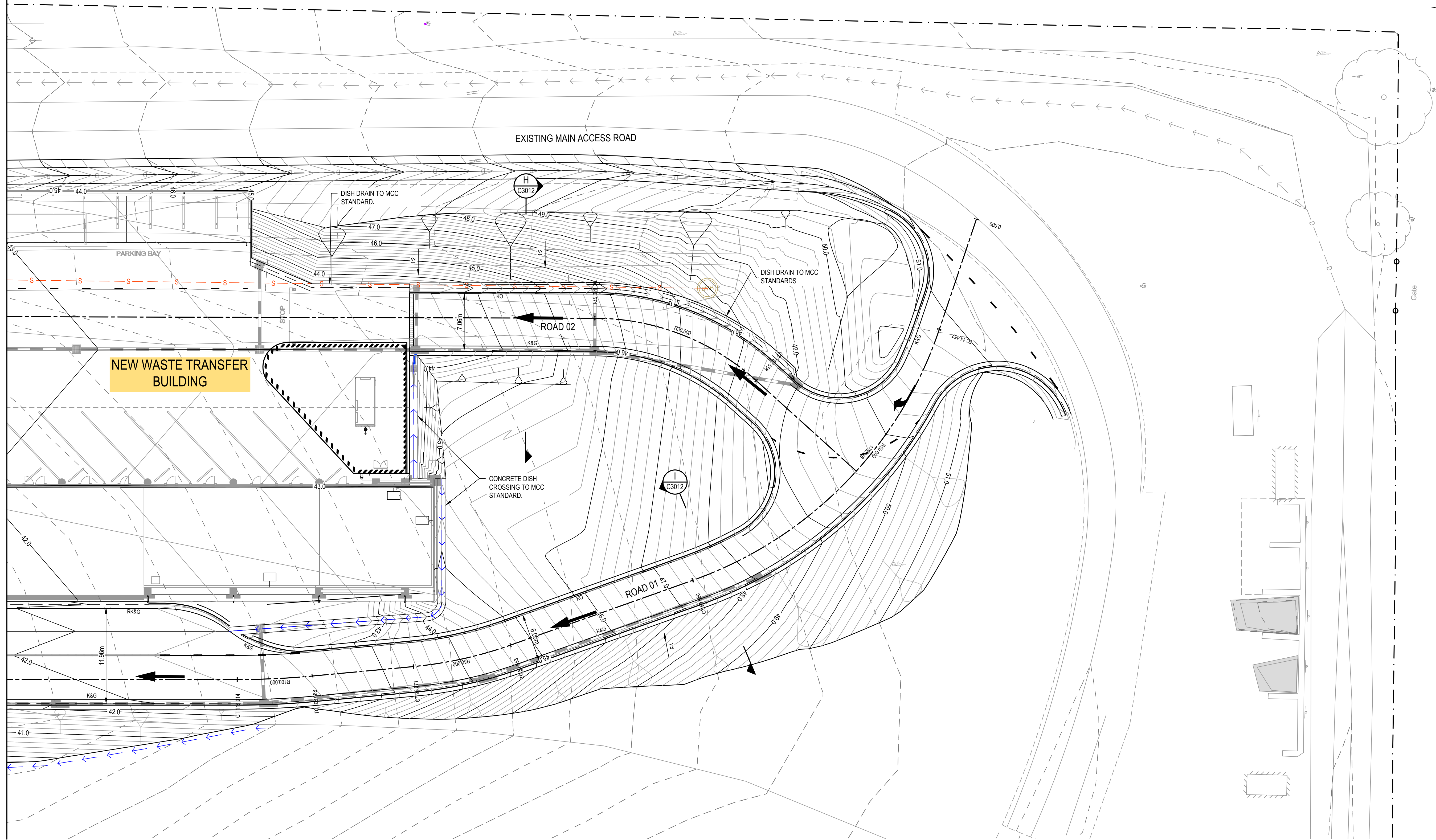
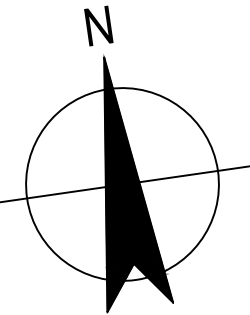
B	RE-ISSUED FOR PLANNING REVIEW		BD		29.01.19
A	ISSUED FOR PLANNING REVIEW		BD		20.12.18
No	Revision	Note: * indicates signatures on original issue of drawing or last revision of drawing	Drawn	Job Manager	Project Director
					Date



DO NOT SCALE		Drawn	C. PURDON	Designer	N. HINCKS	Client	MAITLAND CITY COUNCIL	
Conditions of Use. This document may only be used by GHD's client (and any other person who GHD has agreed can use this document) for the purpose for which it was prepared and must not be used by any other person or for any other purpose.		Drafting Check		Design Check	A. SNEDDON	Project	MT VINCENT ROAD WASTE MANAGEMENT CENTRE	
		Approved (Project Director)				Title	DETAIL PLAN	
		Date					SHEET 2	
Scale	AS SHOWN	This Drawing must not be used for Construction unless signed as Approved		Original Size	A1	Drawing No:	22-17697-C3006	
						Rev:	B	

NOTE

1. FOR PROPOSED WORKS AND SURVEY LEGEND REFER TO DRAWING 22-17697-C1002



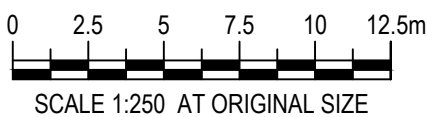
UTILITY INFORMATION SHOWN ON THESE PLANS DOES NOT DEPICT ANY MORE THAN THE PRESENCE OF A SERVICE, BASED ON AVAILABLE DOCUMENTARY EVIDENCE. THE PRESENCE OF A UTILITY SERVICE, ITS SIZE AND LOCATION SHOULD BE CONFIRMED BY FIELD INSPECTION, PRIOR TO THE COMMENCEMENT OF ROADWORKS AND THE RELEVANT UTILITY PLANS OBTAINED BY DIALLING DIAL BEFORE YOU DIG '1100'. CAUTION SHOULD BE EXERCISED WHEN WORKING IN THE VICINITY OF ALL UTILITY SERVICES.

THIS DRAWING INCLUDES COLOURED INFORMATION. IF YOU HAVE A BLACK AND WHITE COPY YOU DO NOT HAVE ALL THE INFORMATION. THIS NOTE IS COLOURED RED.

PLAN
SCALE 1:250

DETAIL DESIGN

B	RE-ISSUED FOR PLANNING REVIEW	BD			29.01.19
A	ISSUED FOR PLANNING REVIEW	BD			20.12.18
No	Revision	Note: * indicates signatures on original issue of drawing or last revision of drawing	Drawn	Job Manager	Project Director



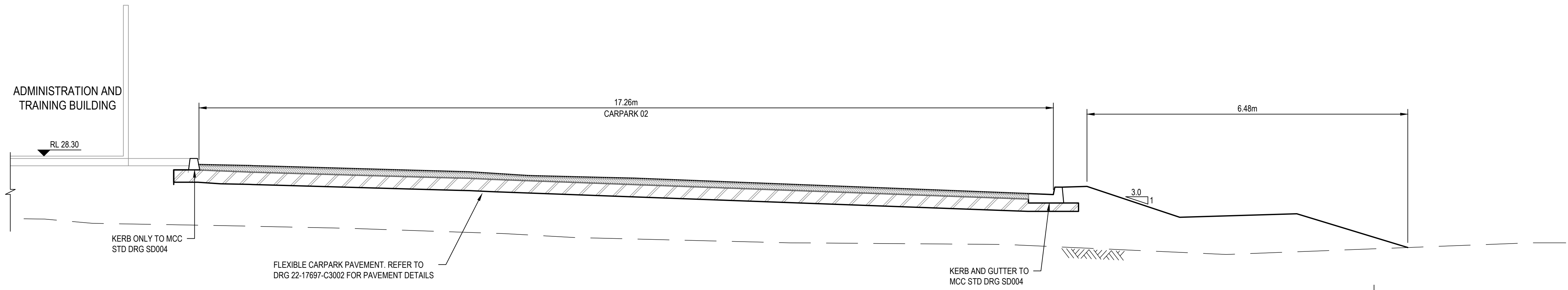
GHD Tower, Level 3
24 Honeysuckle Drive, Newcastle NSW 2300 Australia
PO Box 5403 Hunter Rgn Mail Cent. NSW 2310
T 61 2 4979 9599 F 61 2 4979 9988
E ntlmail@ghd.com W www.ghd.com

DO NOT SCALE

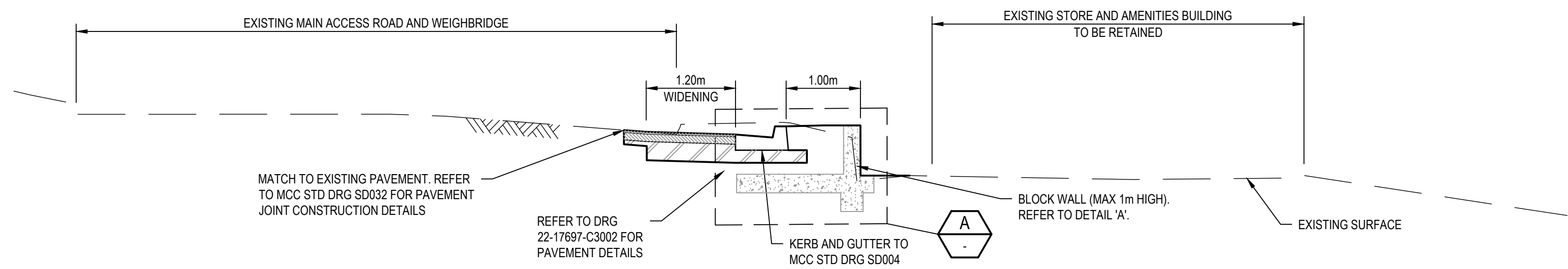
Conditions of Use.
This document may only be used by GHD's client (and any other person who GHD has agreed can use this document) for the purpose for which it was prepared and must not be used by any other person or for any other purpose.

Drawn	C.PURDON	Designer	N. HINCKS
Drafting Check		Design Check	A. SNEDDON
Approved (Project Director)		Date	
Scale	AS SHOWN	This Drawing must not be used for Construction unless signed as Approved	

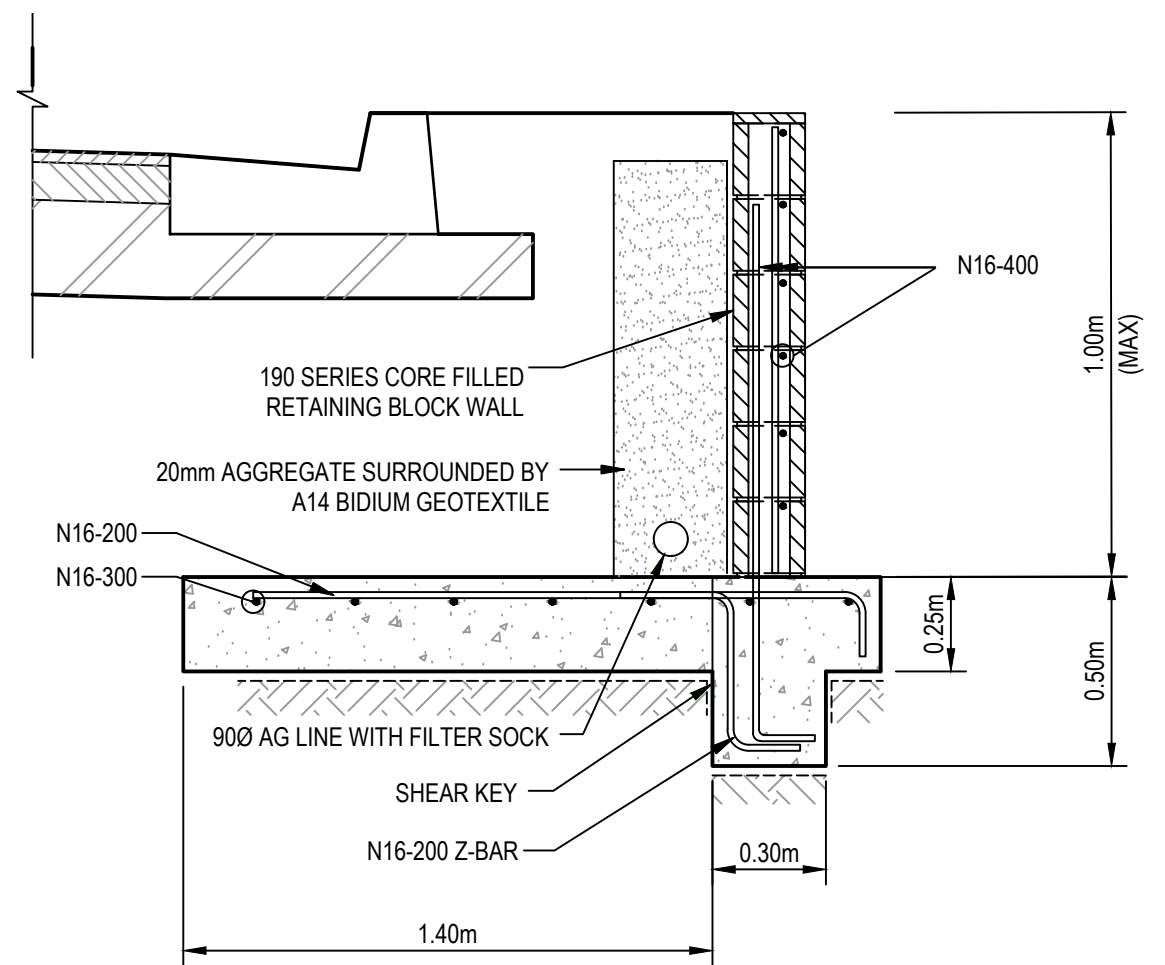
Client	MAITLAND CITY COUNCIL		
Project	MT VINCENT ROAD WASTE MANAGEMENT CENTRE		
Title	DETAIL PLAN SHEET 3		
Original Size	A1	Drawing No:	22-17697-C3007
Rev:	B		



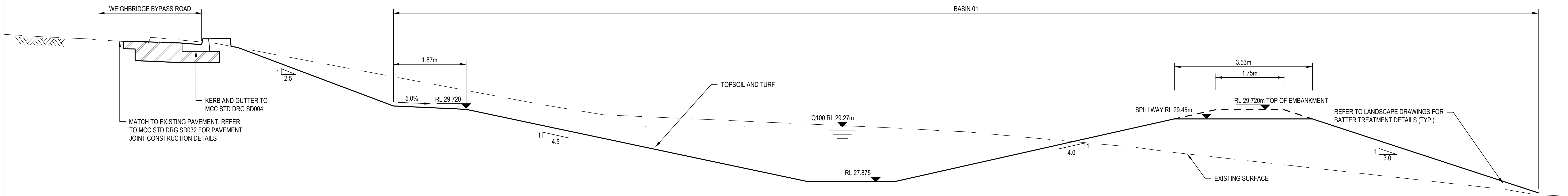
B SECTION
C3005 SCALE 1 : 50



C SECTION
C3005 SCALE 1 : 50



A DETAIL
SCALE 1 : 20



D SECTION
C3005 SCALE 1 : 50

DETAIL DESIGN

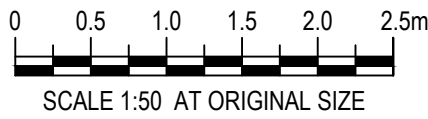
B	RE-ISSUED FOR PLANNING REVIEW	BD			29.01.19
A	ISSUED FOR PLANNING REVIEW	BD			20.12.18
No	Revision	Note: * indicates signatures on original issue of drawing or last revision of drawing	Drawn	Job Manager	Project Director



DO NOT SCALE		Drawn C.PURDON	Designer N. HINCKS	Client MAITLAND CITY COUNCIL
Conditions of Use. This document may only be used by GHD's client (and any other person who GHD has agreed can use this document) for the purpose for which it was prepared and must not be used by any other person or for any other purpose.		Drafting Check	Design Check A. SNEDDON	Project MT VINCENT ROAD WASTE MANAGEMENT CENTRE
		Approved (Project Director) Date		Title TYPICAL SECTIONS AND DETAILS SHEET 1
Scale AS SHOWN		This Drawing must not be used for Construction unless signed as Approved		Original Size A1 Drawing No: 22-17697-C3010 Rev: B

DETAIL DESIGN

B	RE-ISSUED FOR PLANNING REVIEW	BD			29.01.19
A	ISSUED FOR PLANNING REVIEW	BD			20.12.18
No	Revision	Note: * indicates signatures on original issue of drawing or last revision of drawing	Drawn	Job Manager	Project Director

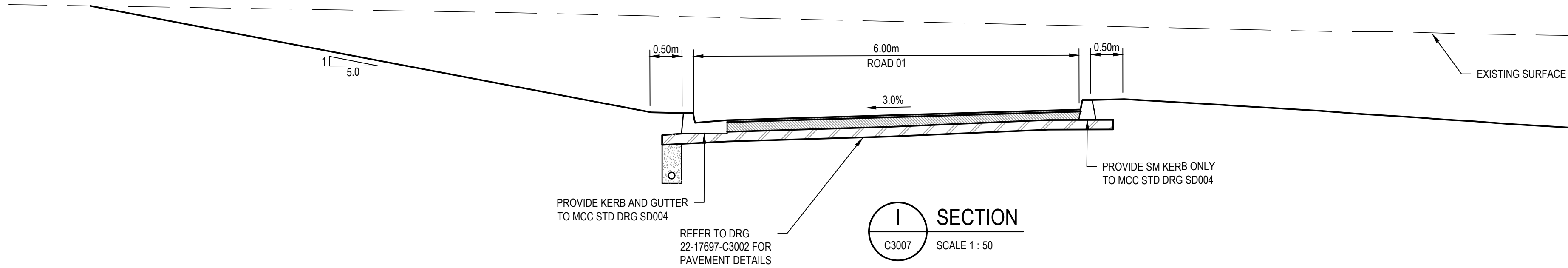
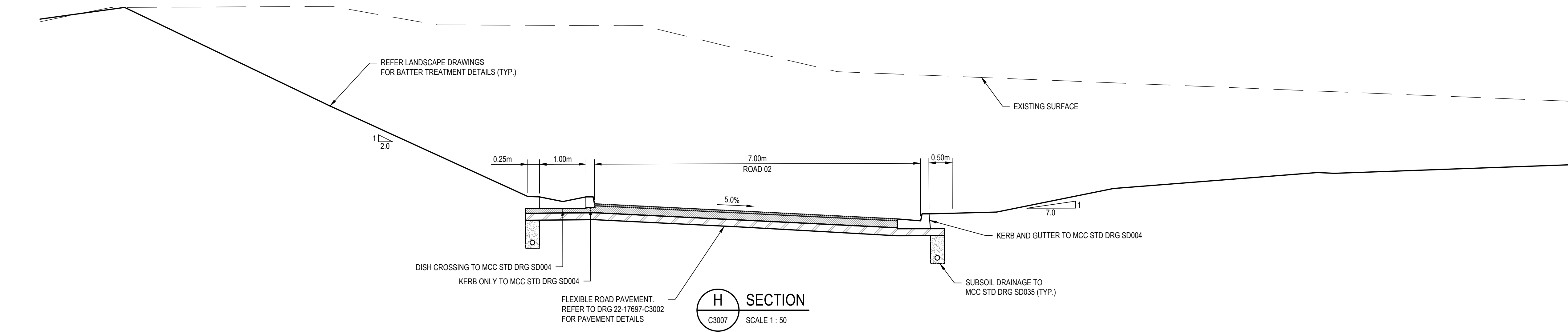


DO NOT SCALE

Conditions of Use.
This document may only be used by GHD's client (and any other person who GHD has agreed can use this document) for the purpose for which it was prepared and must not be used by any other person or for any other purpose.

Drawn	C.PURDON	Designer	N. HINCKS
Drafting Check		Design Check	A. SNEDDON
Approved (Project Director)		Date	
Scale	AS SHOWN	This Drawing must not be used for Construction unless signed as Approved	

Client	MAITLAND CITY COUNCIL		
Project	MT VINCENT ROAD WASTE MANAGEMENT CENTRE		
Title	TYPICAL SECTIONS AND DETAILS		
	SHEET 2		
Original Size	A1	Drawing No:	22-17697-C3011
		Rev:	B



DETAIL DESIGN

B	RE-ISSUED FOR PLANNING REVIEW	BD			29.01.19
A	ISSUED FOR PLANNING REVIEW	BD			20.12.18
No	Revision	Note: * indicates signatures on original issue of drawing or last revision of drawing	Drawn	Job Manager	Project Director



DO NOT SCALE		Drawn C.PURDON		Designer N. HINCKS		Client		MAITLAND CITY COUNCIL	
<div>Conditions of Use.</div> <div>This document may only be used by GHD's client (and any other person who GHD has agreed can use this document) for the purpose for which it was prepared and must not be used by any other person or for any other purpose.</div>		Drafting Check		Design Check A. SNEDDON		Project		MT VINCENT ROAD WASTE MANAGEMENT CENTRE	
		Approved (Project Director)				Title		TYPICAL SECTIONS AND DETAILS	
		Date				SHEET 3			
		Scale AS SHOWN		This Drawing must not be used for Construction unless signed as Approved		Original Size			
						A1		Drawing No: 22-17697-C3012	
								Rev: B	

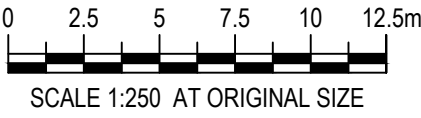


PLAN
SCALE 1:250

- NOTE
1. REFER TO DRAWING C3072 FOR PIT SCHEDULE.
 2. REFER TO DRAWING C3002 FOR GENERAL NOTES AND DRAWING C3003 FOR LEGEND.
 3. REFER TO DRAWING C3057 FOR LEACHATE PIT SCHEDULE.

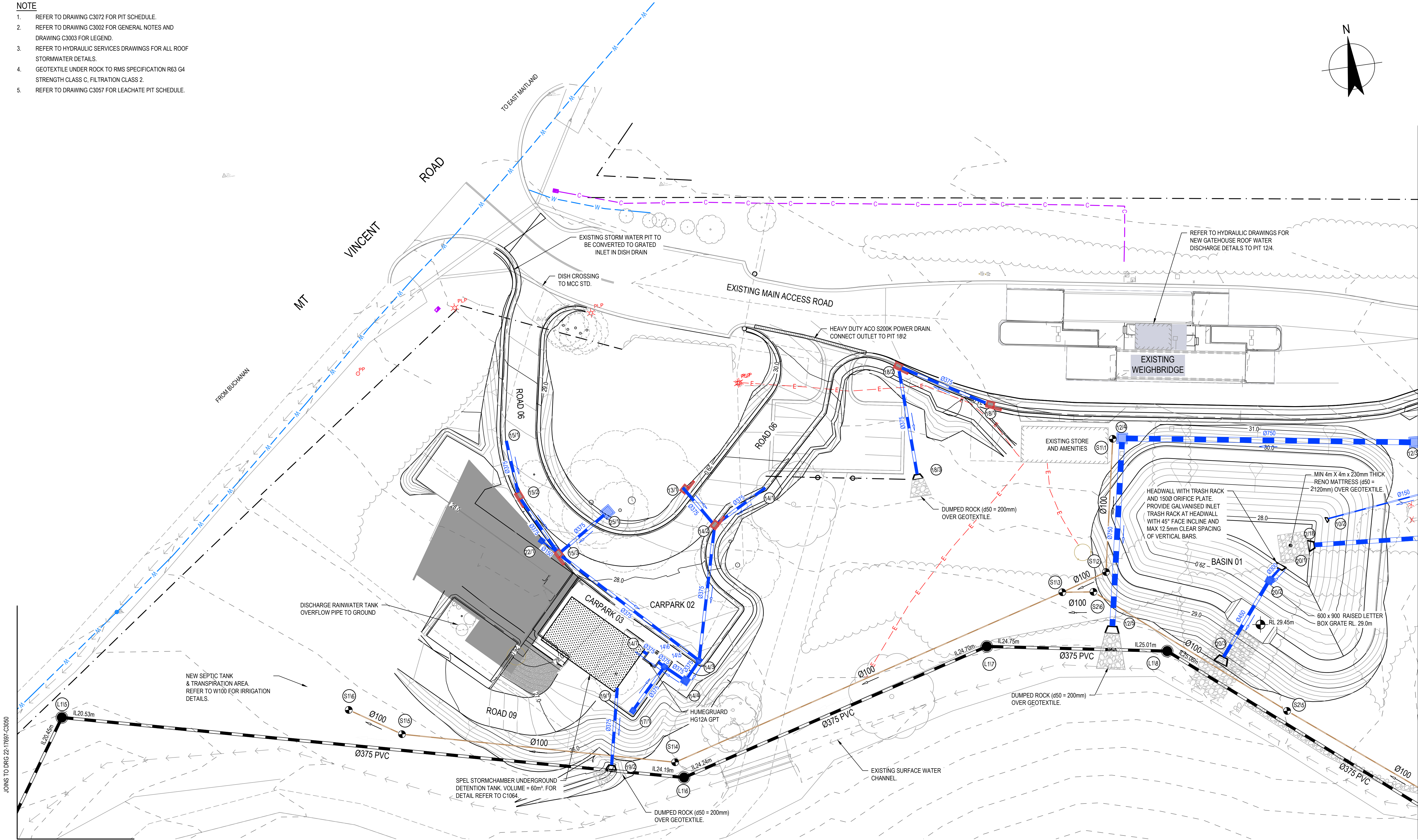
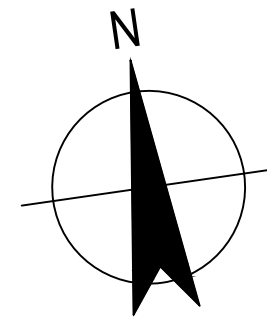
DETAIL DESIGN

B	RE-ISSUED FOR PLANNING REVIEW	BD			29.01.19
A	ISSUED FOR PLANNING REVIEW	BD			20.12.18
No	Revision	Note: * Indicates signatures on original issue of drawing or last revision of drawing	Drawn	Job Manager	Project Director
					Date



DO NOT SCALE		Drawn C. PURDON	Designer N. HINCKS	Client	MAITLAND CITY COUNCIL				
Conditions of Use. This document may only be used by GHD's client (and any other person who GHD has agreed can use this document) for the purpose for which it was prepared and must not be used by any other person or for any other purpose.		Drafting Check	Design Check A. SNEDDON	Project	MT VINCENT ROAD WASTE MANAGEMENT CENTRE				
		Approved (Project Director)		Title	DRAINAGE PLAN				
		Date		SHEET 1					
Scale AS SHOWN		This Drawing must not be used for Construction unless signed as Approved		Original Size	A1 Drawing No: 22-17697-C3050				Rev: B

- NOTE
1. REFER TO DRAWING C3072 FOR PIT SCHEDULE.
 2. REFER TO DRAWING C3002 FOR GENERAL NOTES AND DRAWING C3003 FOR LEGEND.
 3. REFER TO HYDRAULIC SERVICES DRAWINGS FOR ALL ROOF STORMWATER DETAILS.
 4. GEOTEXTILE UNDER ROCK TO RMS SPECIFICATION R63 G4 STRENGTH CLASS C, FILTRATION CLASS 2.
 5. REFER TO DRAWING C3057 FOR LEACHATE PIT SCHEDULE.



UTILITY INFORMATION SHOWN ON THESE PLANS DOES NOT DEPICT ANY MORE THAN THE PRESENCE OF A SERVICE, BASED ON AVAILABLE DOCUMENTARY EVIDENCE. THE PRESENCE OF A UTILITY SERVICE, ITS SIZE AND LOCATION SHOULD BE CONFIRMED BY FIELD INSPECTION PRIOR TO THE COMMENCEMENT OF ROADWORKS AND THE RELEVANT UTILITY PLANS OBTAINED BY DIALLING DIAL BEFORE YOU DIG '1100'. CAUTION SHOULD BE EXERCISED WHEN WORKING IN THE VICINITY OF ALL UTILITY SERVICES.

THIS DRAWING INCLUDES COLOURED INFORMATION. IF YOU HAVE A BLACK AND WHITE COPY YOU DO NOT HAVE ALL THE INFORMATION. THIS NOTE IS COLOURED RED.

PLAN
SCALE 1:250

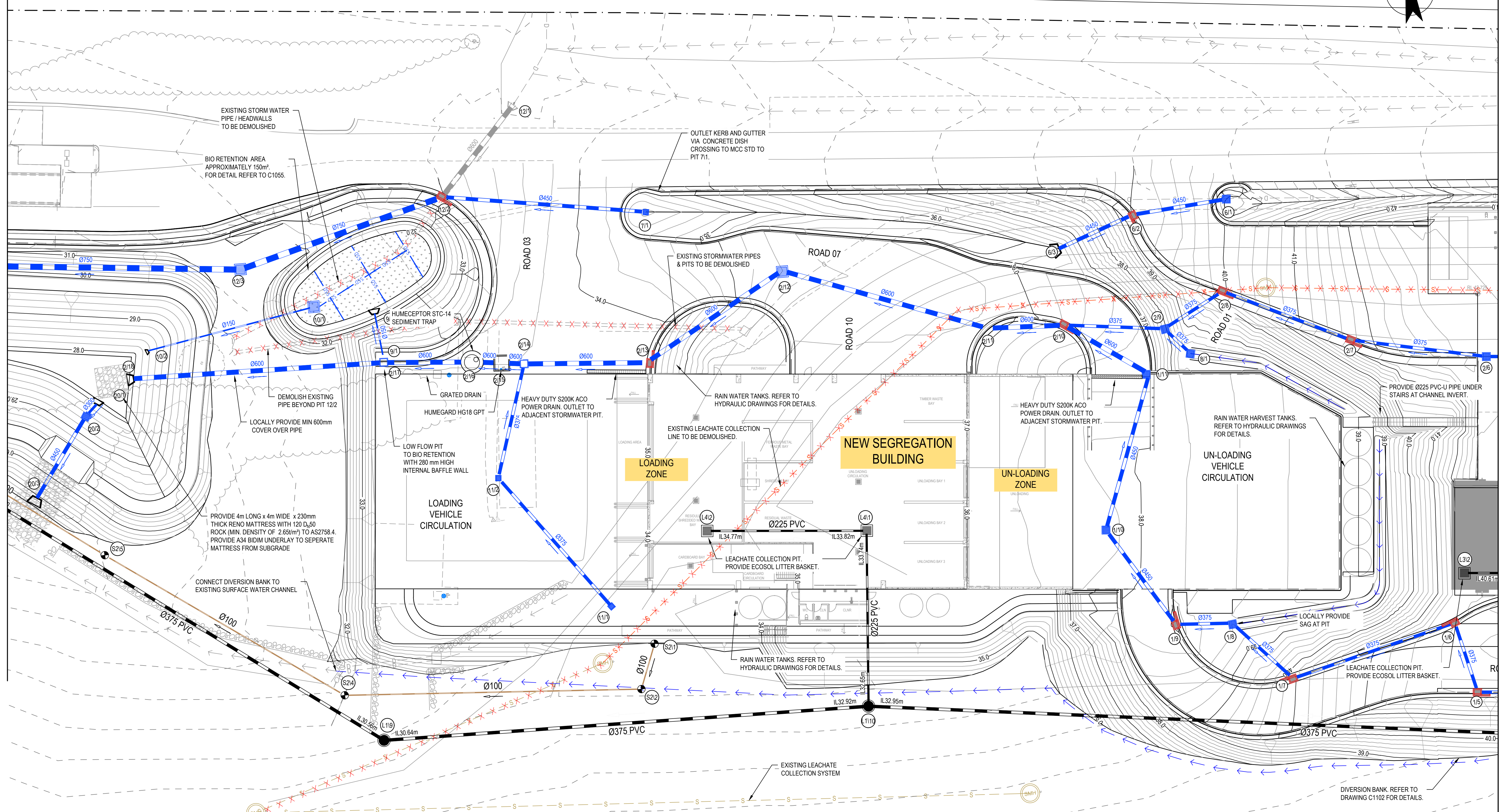
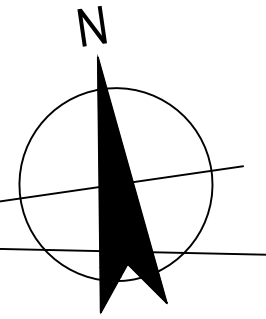
DETAIL DESIGN

B	RE-ISSUED FOR PLANNING REVIEW		BD		29.01.19
A	ISSUED FOR PLANNING REVIEW		BD		20.12.18
No	Revision	Note: * indicates signatures on original issue of drawing or last revision of drawing	Drawn	Job Manager	Project Director
					Date



DO NOT SCALE		Drawn	C. PURDON	Designer	N. HINCKS	Client	MAITLAND CITY COUNCIL	
Conditions of Use. This document may only be used by GHD's client (and any other person who GHD has agreed can use this document) for the purpose for which it was prepared and must not be used by any other person or for any other purpose.		Drafting Check		Design Check	A. SNEDDON	Project	MT VINCENT ROAD WASTE MANAGEMENT CENTRE	
		Approved (Project Director)				Title	DRAINAGE PLAN	
		Date					SHEET 2	
Scale	AS SHOWN	This Drawing must not be used for Construction unless signed as Approved		Original Size	A1	Drawing No:	22-17697-C3051	
						Rev:	B	

- NOTE
- REFER TO DRAWING C3072 FOR PIT SCHEDULE.
 - REFER TO DRAWING C3002 FOR GENERAL NOTES AND DRAWING C3003 FOR LEGEND.
 - REFER TO HYDRAULIC SERVICES DRAWINGS FOR ALL ROOF STORMWATER DETAILS.
 - REFER TO DRAWING C3057 FOR LEACHATE PIT SCHEDULE.



UTILITY INFORMATION SHOWN ON THESE PLANS DOES NOT DEPICT ANY MORE THAN THE PRESENCE OF A SERVICE, BASED ON AVAILABLE DOCUMENTARY EVIDENCE. THE PRESENCE OF A UTILITY SERVICE, ITS SIZE AND LOCATION SHOULD BE CONFIRMED BY FIELD INSPECTION PRIOR TO THE COMMENCEMENT OF ROADWORKS AND THE RELEVANT UTILITY PLANS OBTAINED BY DIALLING DIAL BEFORE YOU DIG '1100'. CAUTION SHOULD BE EXERCISED WHEN WORKING IN THE VICINITY OF ALL UTILITY SERVICES.

THIS DRAWING INCLUDES COLOURED INFORMATION. IF YOU HAVE A BLACK AND WHITE COPY YOU DO NOT HAVE ALL THE INFORMATION. THIS NOTE IS COLOURED RED.

PLAN
SCALE 1:250

DETAIL DESIGN

B	RE-ISSUED FOR PLANNING REVIEW		BD		29.01.19
A	ISSUED FOR PLANNING REVIEW		BD		20.12.18
No	Revision	Note: * indicates signatures on original issue of drawing or last revision of drawing	Drawn	Job Manager	Project Director
					Date



GHD Tower, Level 3
24 Honeysuckle Drive, Newcastle NSW 2300 Australia
PO Box 5403 Hunter Rgn Mail Cent. NSW 2310
T 61 2 4979 9999 F 61 2 4979 9988
E ntmil@ghd.com W www.ghd.com

DO NOT SCALE

Conditions of Use.
This document may only be used by GHD's client (and any other person who GHD has agreed can use this document) for the purpose for which it was prepared and must not be used by any other person or for any other purpose.

Drawn C.PURDON

Designer N. HINCKS

Drafting Check

Design Check A. SNEDDON

Approved (Project Director)

Date

Scale AS SHOWN

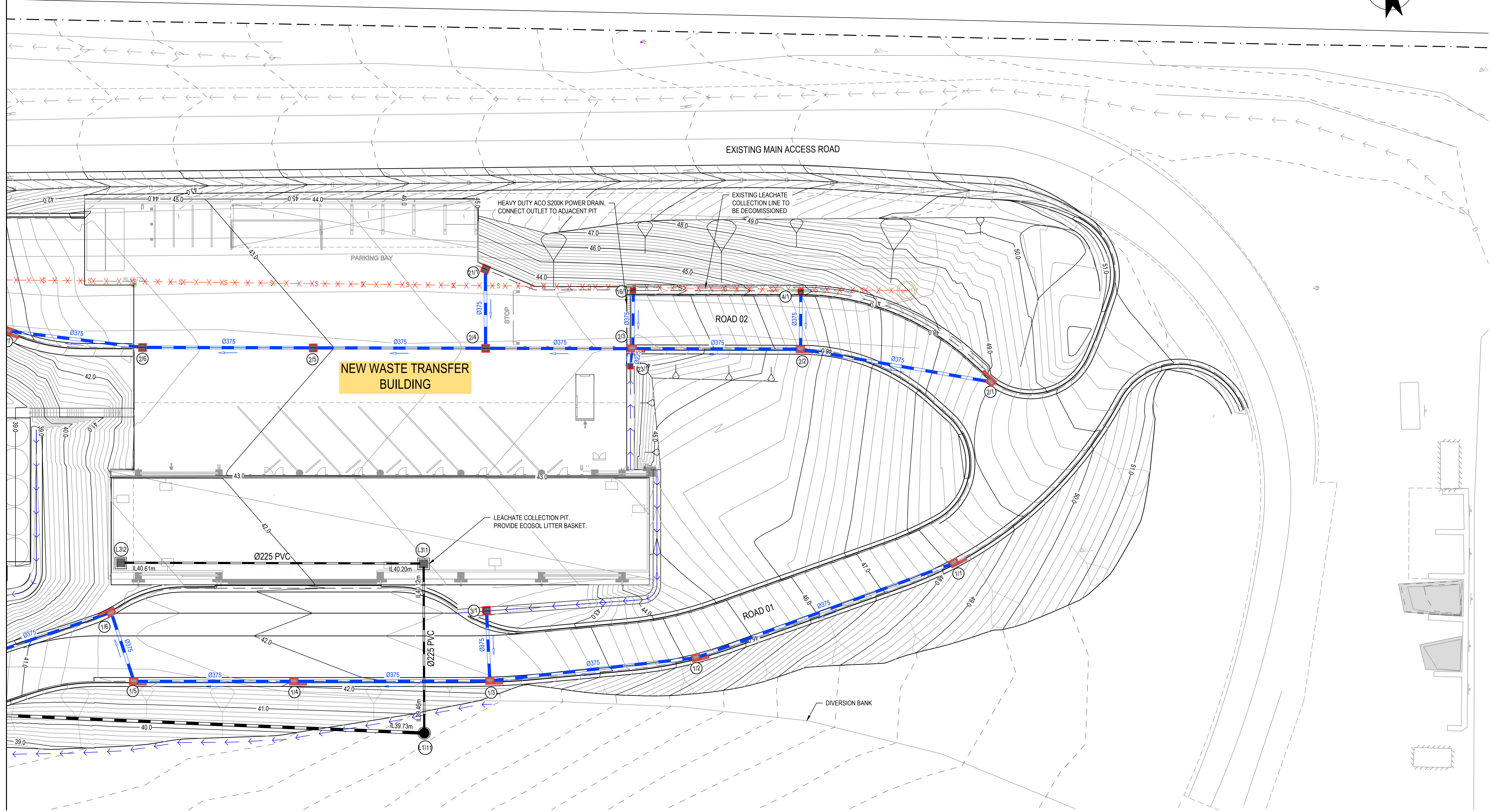
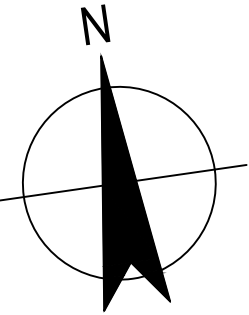
This Drawing must not be used for Construction unless signed as Approved

Client **MAITLAND CITY COUNCIL**
Project **MT VINCENT ROAD WASTE MANAGEMENT CENTRE**
Title **DRAINAGE PLAN SHEET 3**

Original Size **A1** Drawing No: **22-17697-C3052**

Rev: B

- NOTE
- REFER TO DRAWING C3072 FOR PIT SCHEDULE.
 - REFER TO DRAWING C3002 FOR GENERAL NOTES AND DRAWING C3003 FOR LEGEND.
 - REFER TO DRAWING C3057 FOR LEACHATE PIT SCHEDULE.



JOINS TO DRG 22-17697-C3053



UTILITY INFORMATION SHOWN ON THESE PLANS DOES NOT DEPICT ANY MORE THAN THE PRESENCE OF A SERVICE, BASED ON AVAILABLE DOCUMENTARY EVIDENCE. THE PRESENCE OF A UTILITY SERVICE, ITS SIZE AND LOCATION SHOULD BE CONFIRMED BY FIELD INSPECTION PRIOR TO THE COMMENCEMENT OF ROADWORKS AND THE RELEVANT UTILITY PLANS OBTAINED BY DIALLING DIAL BEFORE YOU DIG '1100'. CAUTION SHOULD BE EXERCISED WHEN WORKING IN THE VICINITY OF ALL UTILITY SERVICES.

THIS DRAWING INCLUDES COLOURED INFORMATION. IF YOU HAVE A BLACK AND WHITE COPY YOU DO NOT HAVE ALL THE INFORMATION. THIS NOTE IS COLOURED RED.

PLAN
SCALE 1:250



DO NOT SCALE

Conditions of Use.
This document may only be used by GHD's client (and any other person who GHD has agreed can use this document) for the purpose for which it was prepared and must not be used by any other person or for any other purpose.

Drawn C.PURDON

Designer N. HINCKS

Drafting Check

Design Check A. SNEDDON

Approved (Project Director)

Date

Scale AS SHOWN

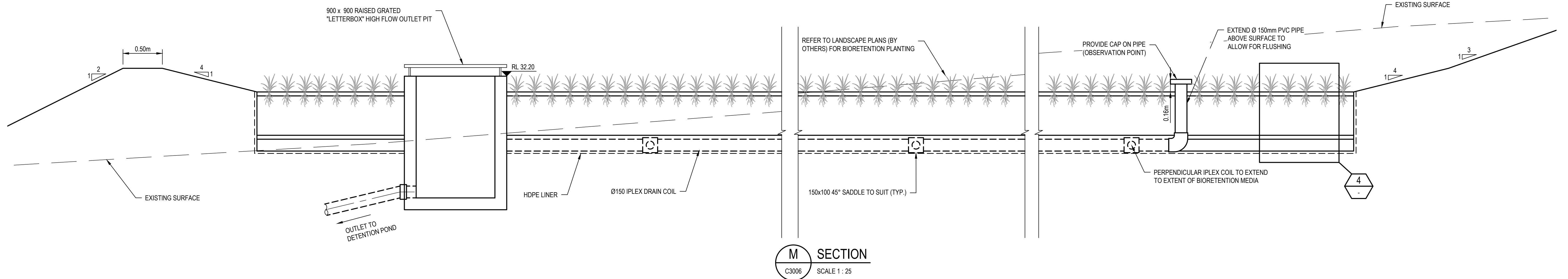
This Drawing must not be used for Construction unless signed as Approved

Client **MAITLAND CITY COUNCIL**
Project **MT VINCENT ROAD WASTE MANAGEMENT CENTRE**
Title **DRAINAGE PLAN SHEET 4**

Original Size **A1** Drawing No: **22-17697-C3053**

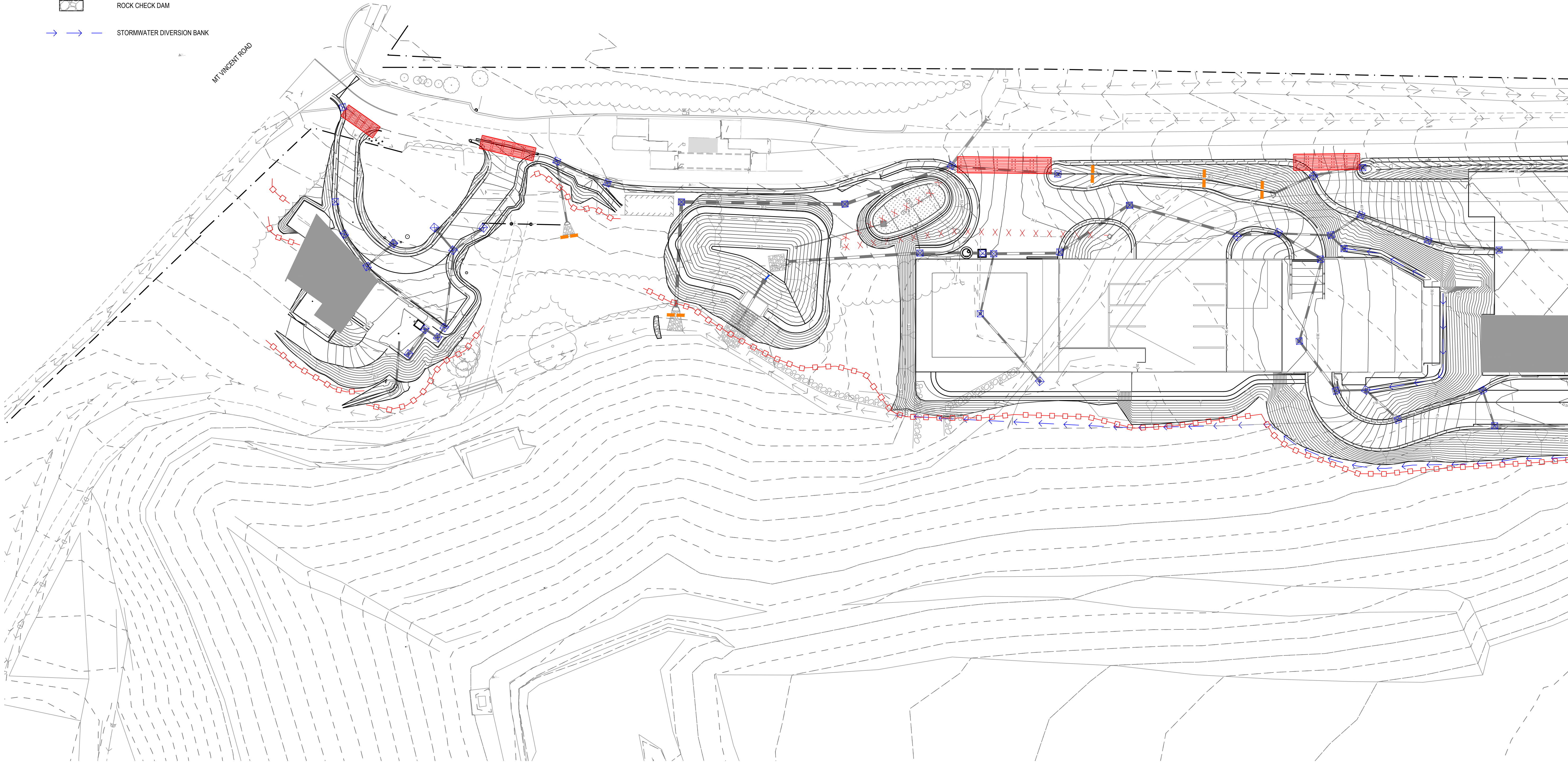
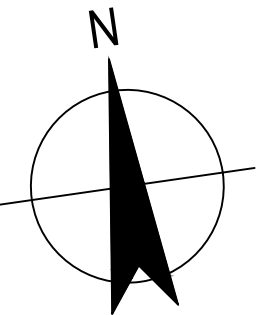
Rev: **B**





LEGEND

- SEDIMENT FENCE
- STRAW BALE
- COIR LOGS
- SEDIMENT BARRIER - PIT INLET
- SHAKER GRATE
- ROCK CHECK DAM
- STORMWATER DIVERSION BANK



UTILITY INFORMATION SHOWN ON THESE PLANS DOES NOT DEPICT ANY MORE THAN THE PRESENCE OF A SERVICE, BASED ON AVAILABLE DOCUMENTARY EVIDENCE. THE PRESENCE OF A UTILITY SERVICE, ITS SIZE AND LOCATION SHOULD BE CONFIRMED BY FIELD INSPECTION PRIOR TO THE COMMENCEMENT OF ROADWORKS AND THE RELEVANT UTILITY PLANS OBTAINED BY DIALLING DIAL BEFORE YOU DIG '1100'. CAUTION SHOULD BE EXERCISED WHEN WORKING IN THE VICINITY OF ALL UTILITY SERVICES.

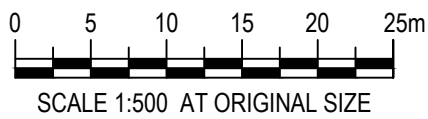
THIS DRAWING INCLUDES COLOURED INFORMATION. IF YOU HAVE A BLACK AND WHITE COPY YOU DO NOT HAVE ALL THE INFORMATION. THIS NOTE IS COLOURED RED.

PLAN
SCALE 1:500

NOTE:
1. REFER TO 22-17697-C2102 FOR EROSION & SEDIMENT CONTROL DETAILS.

DETAIL DESIGN

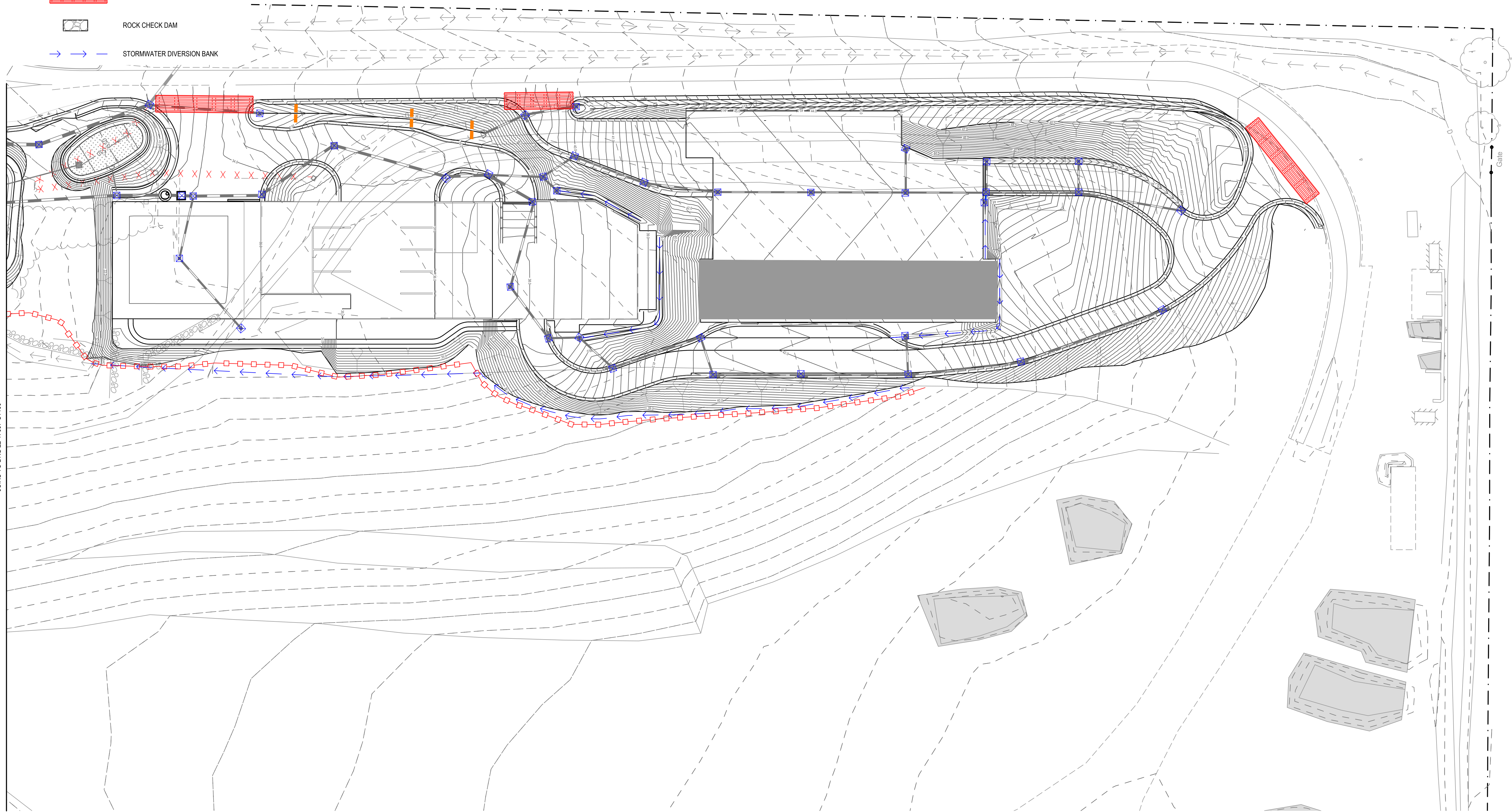
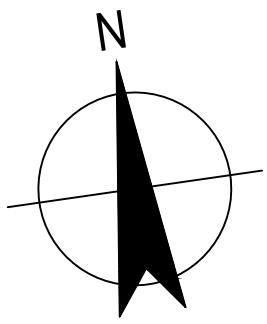
B	RE-ISSUED FOR PLANNING REVIEW	BD			29.01.19
A	ISSUED FOR PLANNING REVIEW	BD			20.12.18
No	Revision	Note: * Indicates signatures on original issue of drawing or last revision of drawing	Drawn	Job Manager	Project Director



DO NOT SCALE		Drawn C.PURDON	Designer N. HINCKS	Client	MAITLAND CITY COUNCIL	
Conditions of Use. This document may only be used by GHD's client (and any other person who GHD has agreed can use this document) for the purpose for which it was prepared and must not be used by any other person or for any other purpose.	Drafting Check	Design Check	A. SNEDDON	Project	MT VINCENT ROAD WASTE MANAGEMENT CENTRE	
	Approved (Project Director)			Title	EROSION AND SEDIMENT CONTROL PLAN	
	Date				SHEET 1	
	Scale AS SHOWN	This Drawing must not be used for Construction unless signed as Approved		Original Size	A1 Drawing No: 22-17697-C3110	
					Rev: B	

LEGEND

- SEDIMENT FENCE
- STRAW BALE
- COIR LOGS
- SEDIMENT BARRIER - PIT INLET
- SHAKER GRATE
- ROCK CHECK DAM
- STORMWATER DIVERSION BANK



JOINS TO DRG 22-17697-C1100



UTILITY INFORMATION SHOWN ON THESE PLANS DOES NOT DEPICT ANY MORE THAN THE PRESENCE OF A SERVICE, BASED ON AVAILABLE DOCUMENTARY EVIDENCE. THE PRESENCE OF A UTILITY SERVICE, ITS SIZE AND LOCATION SHOULD BE CONFIRMED BY FIELD INSPECTION, PRIOR TO THE COMMENCEMENT OF ROADWORKS AND THE RELEVANT UTILITY PLANS OBTAINED BY DIALLING DIAL BEFORE YOU DIG '1100'. CAUTION SHOULD BE EXERCISED WHEN WORKING IN THE VICINITY OF ALL UTILITY SERVICES.

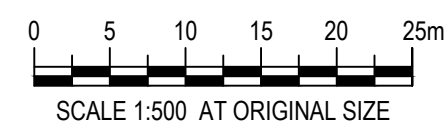
THIS DRAWING INCLUDES COLOURED INFORMATION. IF YOU HAVE A BLACK AND WHITE COPY YOU DO NOT HAVE ALL THE INFORMATION. THIS NOTE IS COLOURED RED.

PLAN
SCALE 1:500

NOTE:
1. REFER TO 22-17697-C2102 FOR EROSION & SEDIMENT CONTROL DETAILS.

DETAIL DESIGN

B	RE-ISSUED FOR PLANNING REVIEW	BD			29.01.19
A	ISSUED FOR PLANNING REVIEW	BD			20.12.18
No	Revision	Note: * Indicates signatures on original issue of drawing or last revision of drawing	Drawn	Job Manager	Project Director
					Date



DO NOT SCALE

Conditions of Use.
This document may only be used by GHD's client (and any other person who GHD has agreed can use this document) for the purpose for which it was prepared and must not be used by any other person or for any other purpose.

Drawn	C.PURDON	Designer	N. HINCKS
Drafting Check		Design Check	A. SNEDDON
Approved (Project Director)		Date	
Scale	AS SHOWN	This Drawing must not be used for Construction unless signed as Approved	

Client	MAITLAND CITY COUNCIL		
Project	MT VINCENT ROAD WASTE MANAGEMENT CENTRE		
Title	EROSION AND SEDIMENT CONTROL PLAN		
	SHEET 2		
Original Size	A1	Drawing No:	22-17697-C3111
		Rev:	B

GENERAL INSTRUCTIONS

- G1 THIS PLAN SHOWS THE CONTROL OBJECTIVES, PHILOSOPHY AND KEY CONTROL WORKS FOR THE SITE. THE CONTRACTOR SHALL PROVIDE SUPPLEMENTARY WORKS THAT REFLECT THE ADOPTED CONSTRUCTION PROGRAM AND PRACTICES TO ENSURE THAT EROSION AND SEDIMENT MOVEMENT ARE MANAGED IN ACCORDANCE WITH THE OBJECTIVES OF THIS PLAN.
- G2 EROSION AND SEDIMENT HAZARD AREAS INCLUDE STOCKPILES, EXPOSED GROUND, EMBANKMENTS, CUTTINGS CONCENTRATED FLOW PATHS AND WATERWAYS.

LAND DISTURBANCE

- L1 THE SOIL EROSION HAZARD ON THE SITE WILL BE KEPT AS LOW AS POSSIBLE AND PRACTICAL. TO THIS END, WORKS SHOULD BE UNDERTAKEN IN THE FOLLOWING GENERAL SEQUENCE:
- A. CONSTRUCTION OF SEDIMENT AND EROSION CONTROLS
- B. PHASE CONSTRUCTION WORKS SO THAT LAND DISTURBANCE IS CONFINED TO AREAS OF WORKABLE SIZE
- C. REHABILITATION OF ANY DISTURBED LANDS WITHIN 20 WORKING DAYS FROM COMPLETION OF CONSTRUCTION ACTIVITIES.

EROSION CONTROL

- E1 TEMPORARY PROTECTION FROM WIND AND WATER EROSION SHALL BE UNDERTAKEN ON LANDS WHERE WORKS ARE UNLIKELY TO PROCEED FOR PERIODS OF AT LEAST TWO MONTHS AND FINAL SHAPING HAS NOT BEEN COMPLETED. THIS MAY BE ACHIEVED WITH A TEMPORARY VEGETATIVE COVER. A RECOMMENDED LISTING OF PLANT SPECIES FOR TEMPORARY COVER IS:
- SPRING/SUMMER SOWING:
 - JAPANESE MILLET @ 20 kg/ha
 - OATS/RYE CORN @ 10 kg/ha
 - AUTUMN/WINTER SOWING:
 - OATS/RYE CORN @ 20 kg/ha
 - JAPANESE MILLET @ 10 kg/ha

- E2 FOOT AND VEHICULAR TRAFFIC SHOULD BE KEPT AWAY FROM ANY REHABILITATED AREAS.

- E3 LARGE, UNPROTECTED AREAS SHALL BE KEPT MOIST (NOT WET) TO CONTROL DUST.

- E4 FINAL SITE LANDSCAPING SHALL BE UNDERTAKEN ON EACH AREA AS SOON AS POSSIBLE AND WITHIN 20 WORKING DAYS FROM COMPLETION OF CONSTRUCTION ACTIVITIES.

SEDIMENT CONTROL

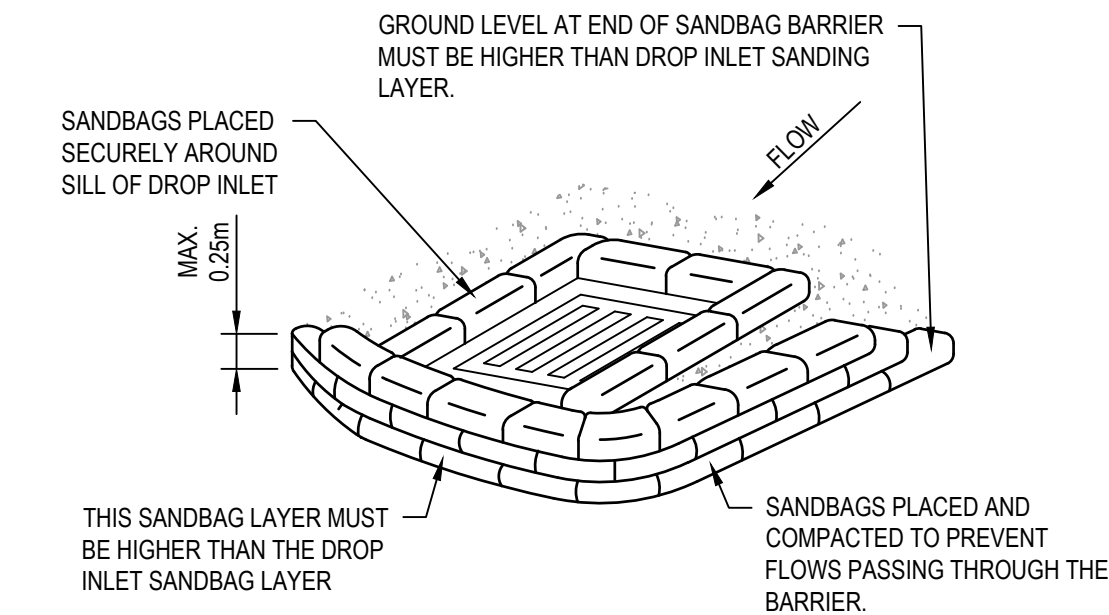
- S1 CLEAN WATER SHALL BE DIVERTED AROUND THE WORKS TO PREVENT CONTAMINATION BY SEDIMENTS.
- S2 STOCKPILES SHALL NOT BE LOCATED WITHIN 2m OF HAZARD AREAS WHERE THEY ARE BETWEEN 2 AND 5m FROM SUCH AREAS. SEDIMENT CONTROL MEASURES SHALL BE TAKEN TO MINIMISE POLLUTION TO DOWNSLOPE WATERS.
- S3 WATER SHALL BE PREVENTED FROM ENTERING THE PERMANENT DRAINAGE SYSTEM UNTIL THE CATCHMENT AREA HAS BEEN PERMANENTLY LANDSCAPED AND/OR ANY LIKELY SEDIMENT HAS BEEN FILTERED THROUGH AN APPROVED STRUCTURE.
- S4 TEMPORARY SEDIMENT AND EROSION CONTROL STRUCTURES ARE TO BE REMOVED ONLY AFTER THE LANDS THEY ARE PROTECTING ARE REHABILITATED AND STABLE AGAINST EROSION.

ADDITIONAL MATTERS

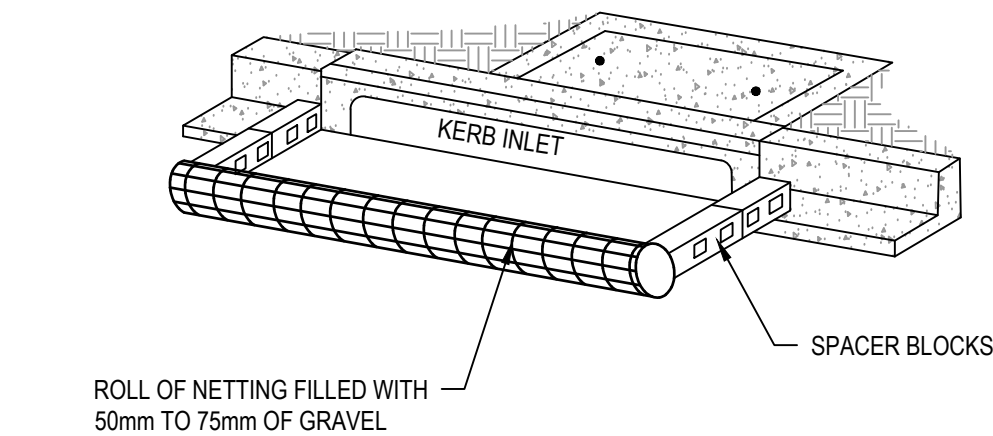
- A1 ACCEPTABLE RECEPTORS SHALL BE PROVIDED FOR CONCRETE AND MORTAR SLURRIES, PAINTS, ACID WASHINGS, LIGHT-WEIGHT WASTE MATERIALS AND LITTER.
- A2 ANY EXISTING TREES WHICH ARE TO REMAIN SHALL BE PROTECTED FROM CONSTRUCTION ACTIVITIES BY:
- ERECTING BARRIER FENCING INSTALLED OUTSIDE THE DRIP LINE.
 - ENSURING THAT NOTHING IS NAILED TO THEM.
- A3 NO SEDIMENT WORKS TO BE LOCATED WITHIN THE RIPARIAN BUFFER.

INSPECTION AND MAINTENANCE

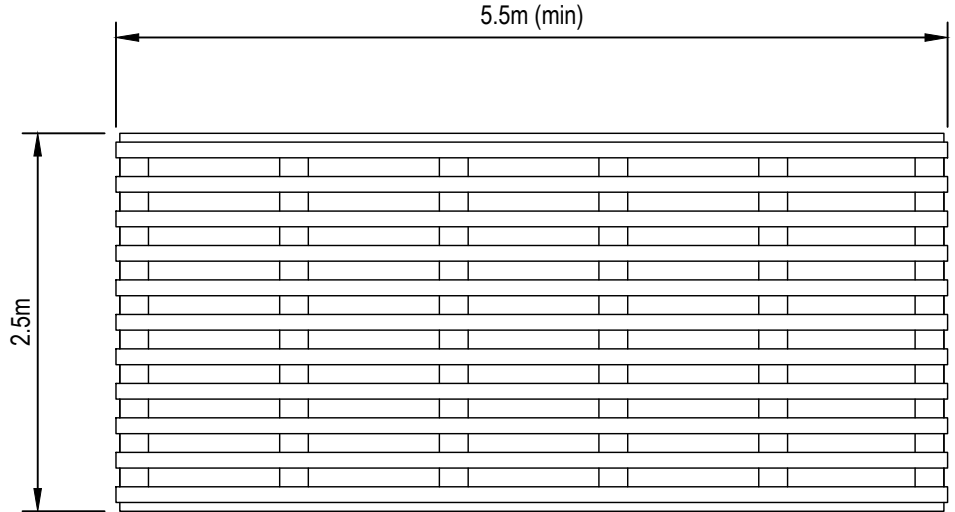
1. RECEPTORS FOR CONCRETE AND MORTAR SLURRIES, PAINTS, ACID WASHINGS, LIGHT-WEIGHT WASTE MATERIALS AND LITTER SHALL BE EMPTIED WHEN 90% FULL. DISPOSE OF WASTE OFF SITE IN A LEGAL MANNER.
2. AT LEAST WEEKLY, THE CONTRACTOR WILL INSPECT THE SITE AND ENSURE THAT:
- DRAINS OPERATE EFFECTIVELY AND INITIATE REPAIR OR MAINTENANCE AS REQUIRED.
 - SPILLED SOIL OR OTHER CONTAMINATES ARE IS REMOVED FROM HAZARD AREAS.
 - SEDIMENT IS REMOVED FROM BASINS AND/OR TRAPS WHEN LESS THAN 20m² OF TRAPPING CAPACITY REMAINING PER 1000m² OF DISTURBED LANDS. AND/OR LESS THAN 500mm DEPTH REMAINS IN THE SETTLING ZONE. ANY COLLECTED SEDIMENT SHALL BE DISPOSED IN AREAS WHERE FURTHER EROSION AND TRANSPORT TO DOWNSLOPE LANDS AND WATERWAYS IS PREVENTED.
 - REHABILITATED LANDS HAVE EFFECTIVELY REDUCED THE EROSION HAZARD AND INITIATE UPGRADING OR REPAIRS AS APPROPRIATE.
3. THE CONTRACTOR SHALL PROVIDE & MAINTAIN A 'LOG BOOK' TO RECORD INFORMATION & DATA WITH RESPECT TO THE SEDIMENT & EROSION CONTROL PLAN. INFORMATION RECORDED MUST INCLUDE:
- RESULTS OF ANY INSPECTIONS
 - RAINFALL EVENTS
 - FAILURES IN THE ESC WORKS
 - REMEDIATION OF ESC WORKS



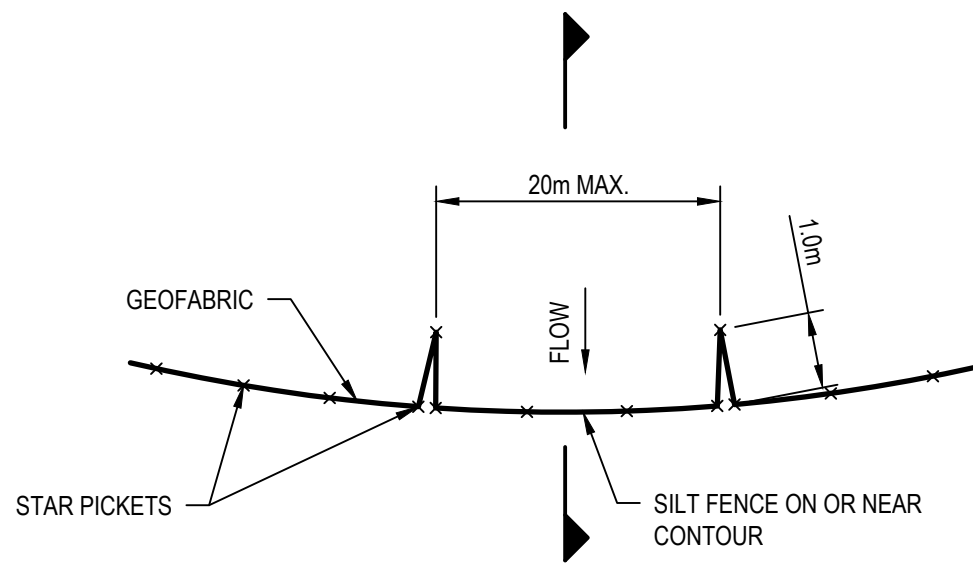
SEDIMENT BARRIER DETAIL
NOT TO SCALE



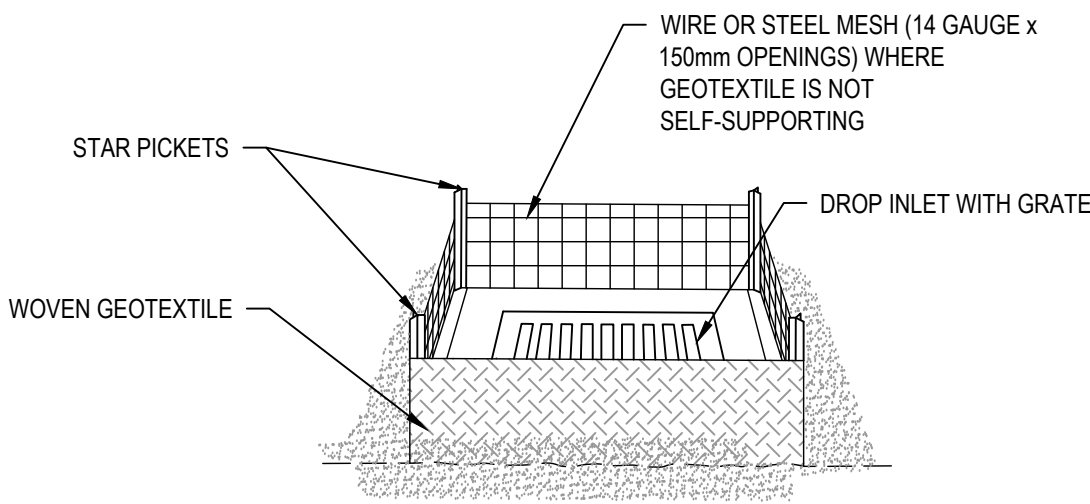
SEDIMENT BARRIER FOR KERB INLET PITS
NOT TO SCALE



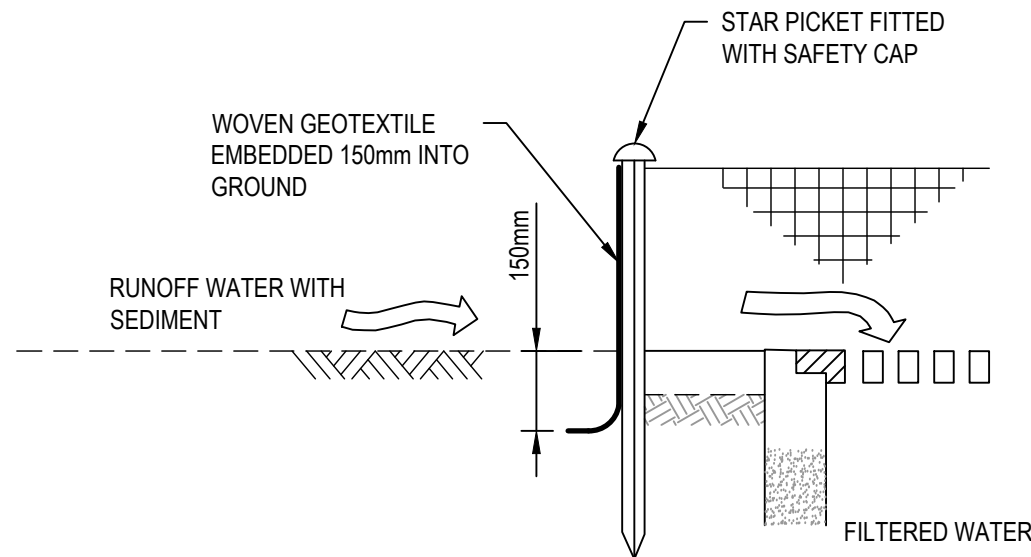
SHAKER GRATE - DETAIL
NOT TO SCALE



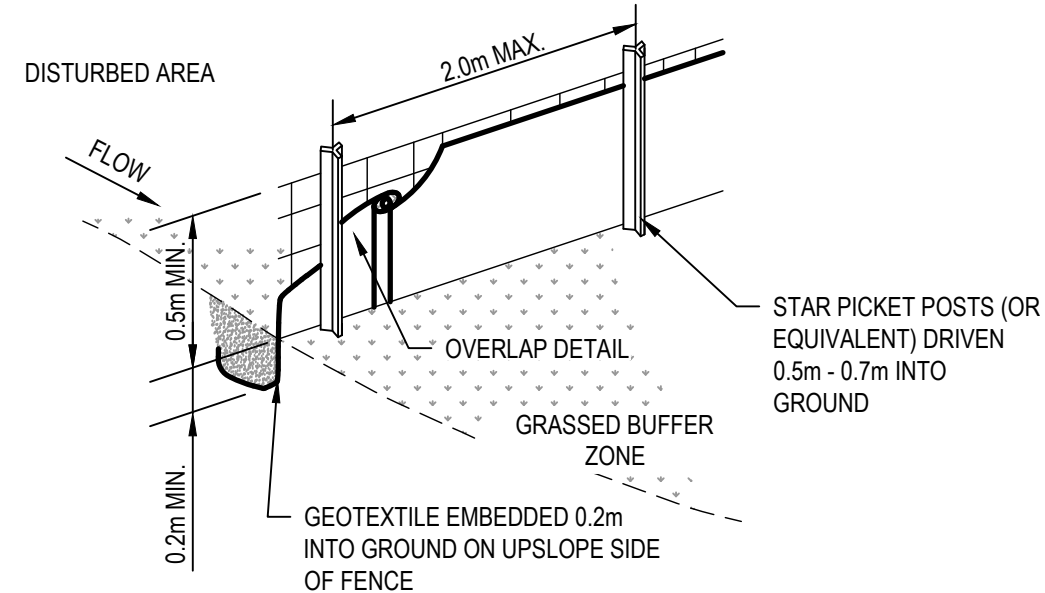
GEOFABRIC SILT FENCE - PLAN
NOT TO SCALE



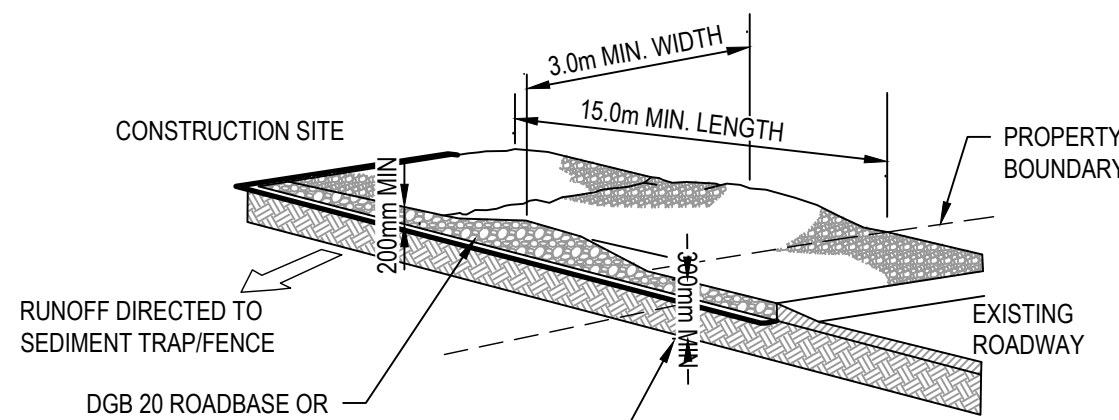
GEOTEXTILE INLET FILTER - PERSPECTIVE
NOT TO SCALE



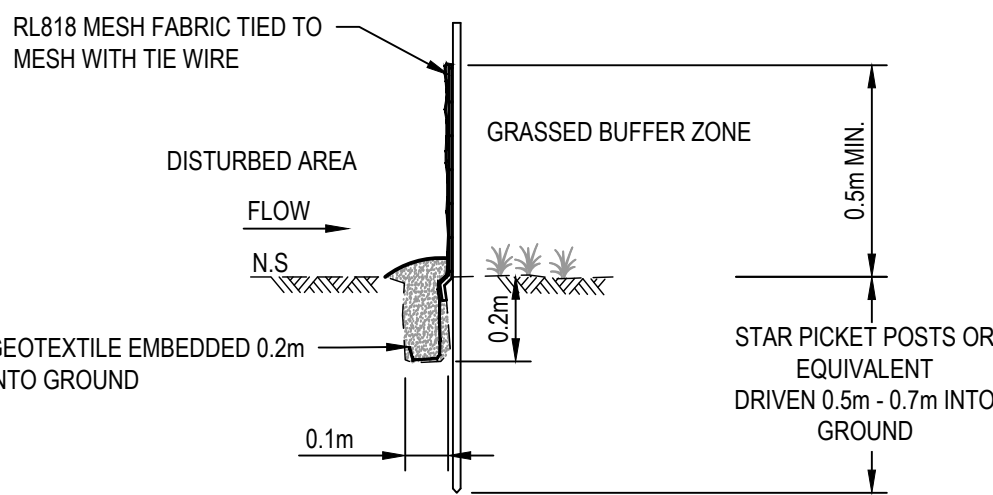
GEOTEXTILE INLET FILTER - SECTION
NOT TO SCALE



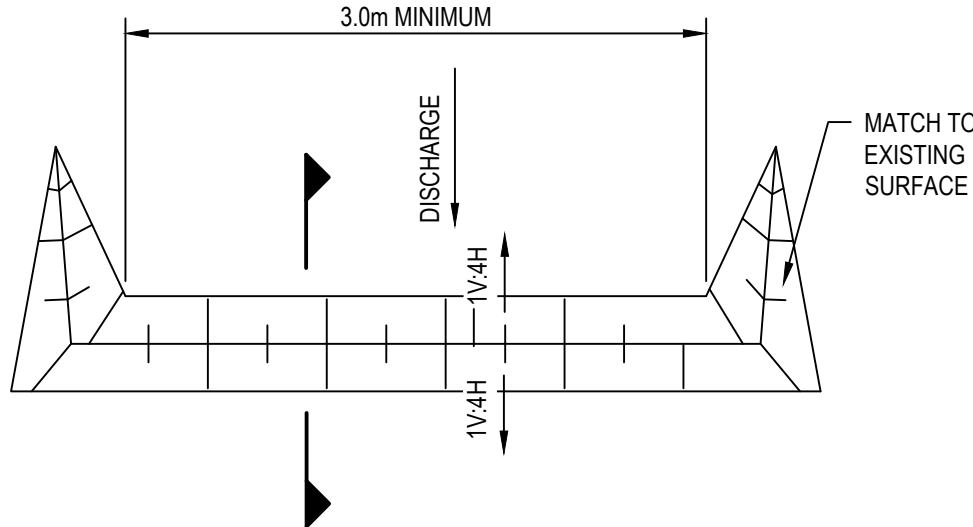
GEOFABRIC SILT FENCE - PERSPECTIVE
NOT TO SCALE



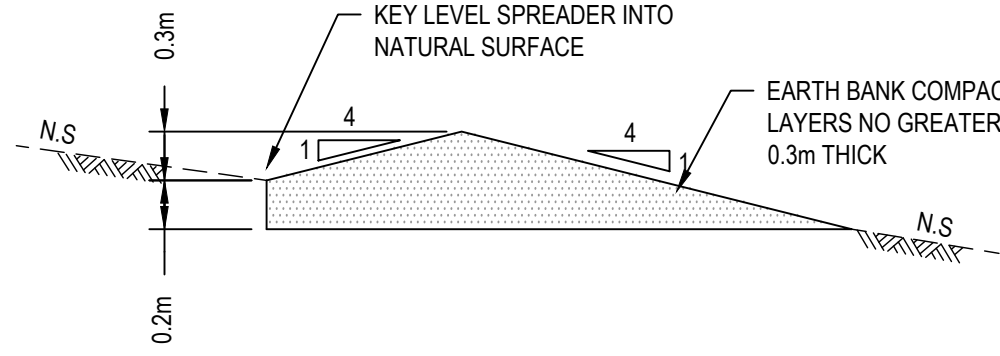
STABILISED SITE ACCESS
NOT TO SCALE



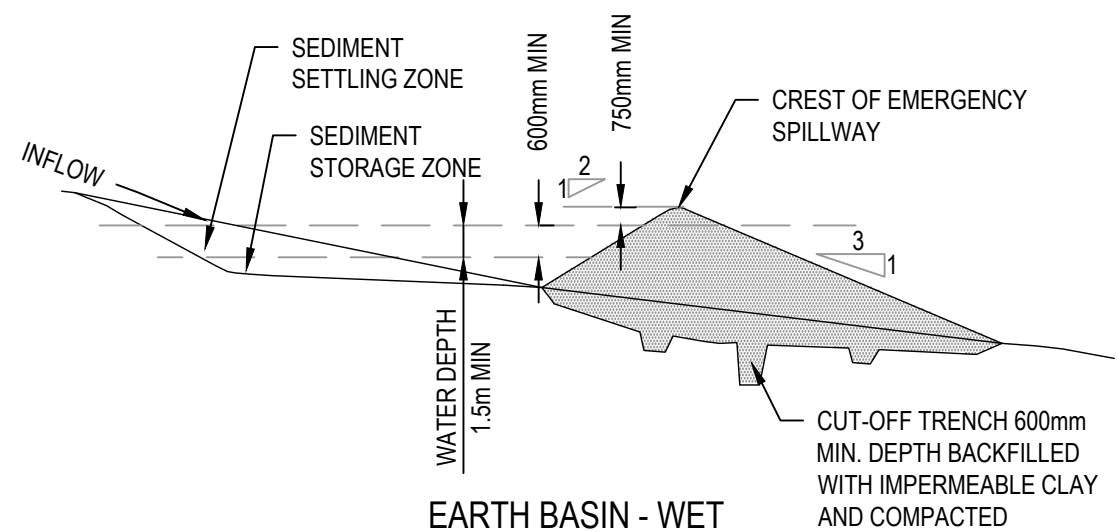
GEOFABRIC SILT FENCE - SECTION
NOT TO SCALE



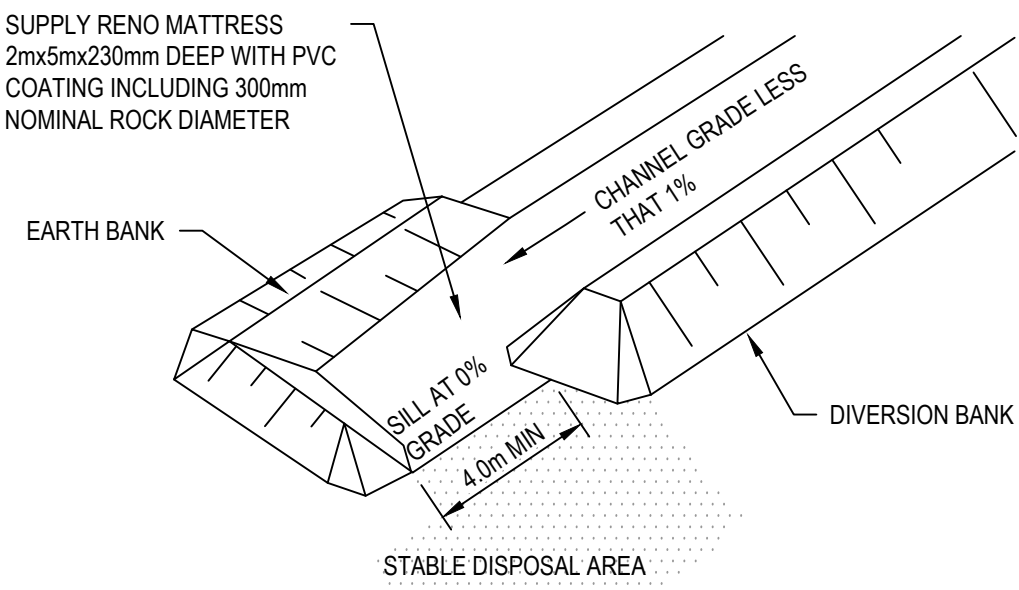
LEVEL SPREADER DETAIL - PLAN
NOT TO SCALE



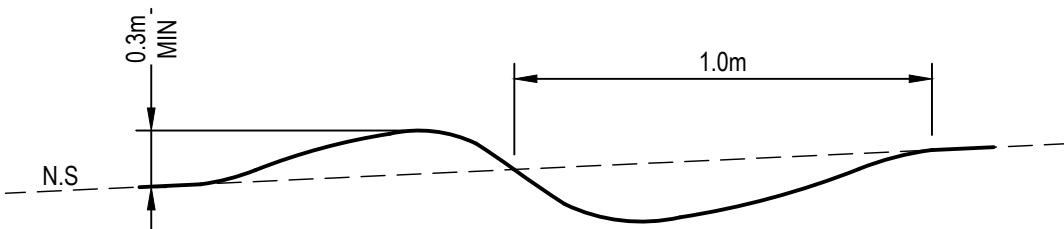
LEVEL SPREADER - SECTION
NOT TO SCALE



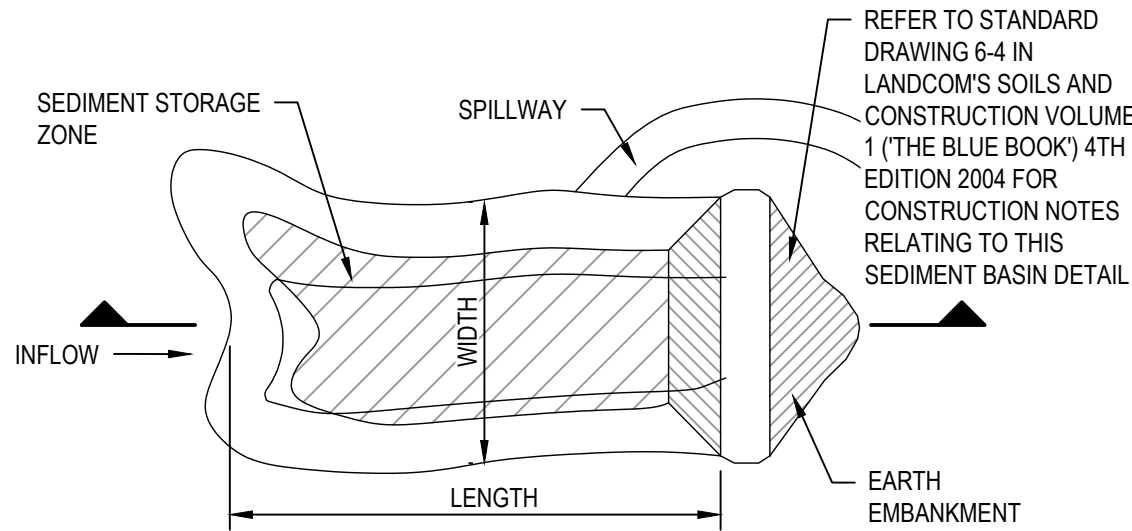
EARTH BASIN - WET
SECTION
NOT TO SCALE



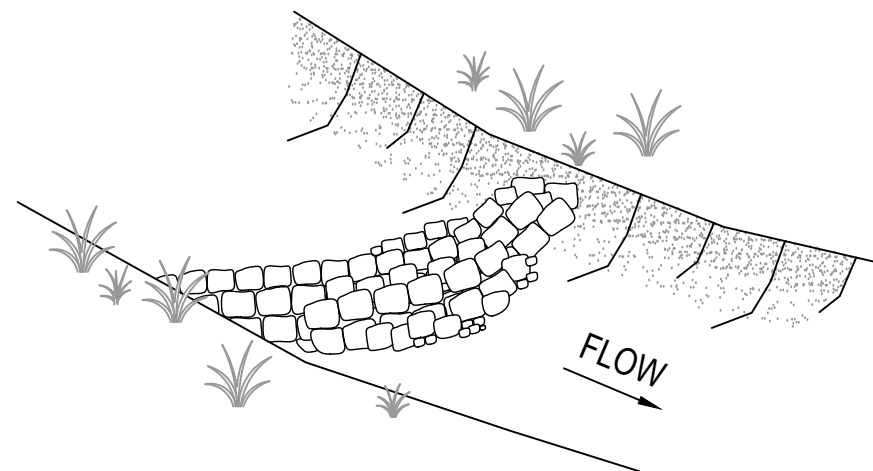
LEVEL SPREADER - PERSPECTIVE
NOT TO SCALE



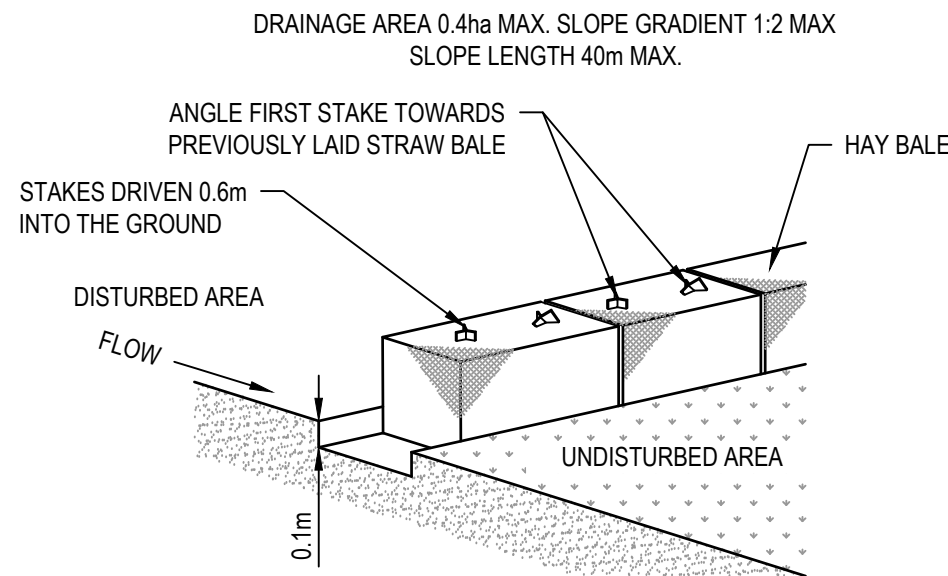
DIVERSION BANK
NOT TO SCALE



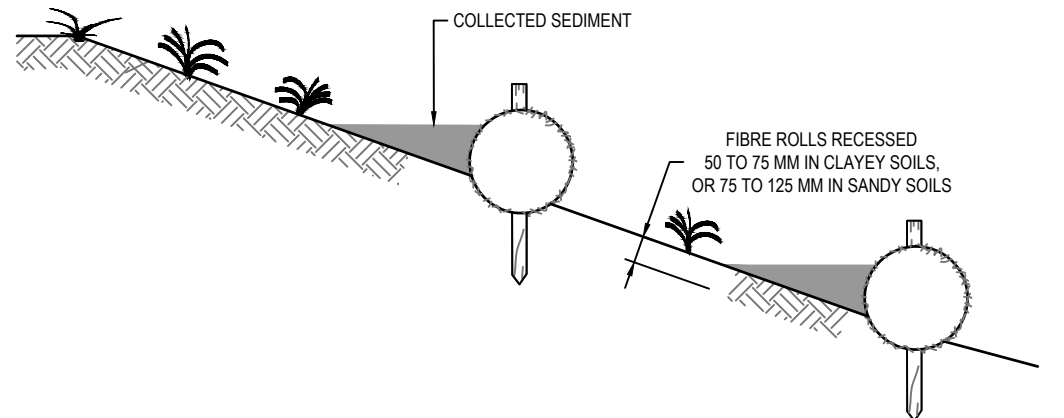
EARTH BASIN - WET
PLAN
NOT TO SCALE



ROCK CHECK DAM - PERSPECTIVE
NOT TO SCALE



STRAW BALE SEDIMENT FILTER DETAIL
NOT TO SCALE



COIR LOGS
NOT TO SCALE

DETAIL DESIGN

B	RE-ISSUED FOR PLANNING REVIEW	BD			29.01.19
A	ISSUED FOR PLANNING REVIEW	BD			20.12.18
No	Revision	Note: * Indicates signatures on original issue of drawing or last revision of drawing	Drawn	Job Manager	Project Director
					Date

Plot Date: 30 January 2019 - 4:10 PM

Plotted by: Blake Drew

Cad File Name: G:\22\17697\CADD\Drawings\22-17697-C3112.dwg



DO NOT SCALE		Drawn C.PURDON	Designer N. HINCKS	Client Project Title Original Size	Maitland City Council MT VINCENT ROAD WASTE MANAGEMENT CENTRE EROSION AND SEDIMENT CONTROL DETAILS Drawing No: 22-17697-C3112	Rev: B
Conditions of Use. This document may only be used by GHD's client (and any other person who GHD has agreed can use this document) for the purpose for which it was prepared and must not be used by any other person or for any other purpose.		Drafting Check	Design Check A. SNEDDON			
		Approved (Project Director) Date				
		Scale AS SHOWN	This Drawing must not be used for Construction unless signed as Approved			